

2020 VISITORS GUIDE

WELCOME TO Pepin County



VILLA BELLEZZA WINERY



Siamo Privati

WINE TASTINGS • VINEYARD & WINERY TOURS • OPEN YEAR ROUND
VISIT OUR COUNTRY ITALIAN RESTAURANT FOR LUNCH OR DINNER
INDOOR AND OUTDOOR SPACES FOR WEDDINGS AND OTHER CELEBRATIONS

Located on the scenic Great River Road in Pepin, Wisconsin

www.VillaBellezza.com 715-442-2424 info@villabellezza.com



Welcome to Pepin County

Pepin County is one of Wisconsin's smallest counties, but here you will find that big surprises really do come in small packages. Enjoy our beautiful scenery and escape your everyday life by joining us in Pepin County's communities of Arkansaw, Durand, Pepin, and Stockholm or by seeking out solitude in the countryside. In our opinion, this is one of the most beautiful areas of the state and it's always worth the trip to travel to the West Coast of Wisconsin!

Can you truly say you've visited Pepin County if you haven't?

- ✓ Admired the 100-year old circus lithograph
- ✓ Eaten some award-winning pie, sausage, and cheese
- ✓ Captured a scenic selfie and tagged us #VisitPepinCounty
- ✓ Caught a fish on our mighty rivers
- ✓ Enjoyed Tuesday night pizza from A to Z Produce & Bakery
- ✓ Experienced a WideSpot performance
- ✓ Fallen in love with all four seasons of Pepin County
- ✓ Found a new piece of artwork for your home
- ✓ Jammed out at an outdoor concert
- ✓ Learned some Swedish history
- ✓ Participated in a cooking class
- ✓ Purchased some local produce
- ✓ Rented a kayak or canoe to explore the river
- ✓ Sampled the local wine, cider, and beer
- ✓ Shopped until you drop at our local shops
- ✓ Stopped by the last existing wooden frame courthouse in Wisconsin for a history lesson
- ✓ Taken a leisurely bike ride
- ✓ Tipped back a glass and let loose with the locals
- ✓ Traveled via train car into the Tiffany Wildlife Area
- ✓ Viewed independent films at the Flyway Film Festival
- ✓ Visited Laura Ingalls Cabin and Museum
- ✓ Went on an outdoor adventure

Need help planning your trip? Our tourism team can be reached by calling 715-672-8665 x116 or emailing info@co.pepin.wi.us if you have any questions about things to do or see in Pepin County. Our office is open from 7:30 am to 4:00 pm Monday through Friday, but if you call on the weekend we promise to get back to you.

For more information, such as event dates or businesses, please visit our website: www.visitpepincounty.com. We can also be found on Facebook and Instagram by searching our username **@VisitPepinCounty**; tag us at **#VisitPepinCounty** for a chance to be featured on our social media pages or included in future publications!

Photo credit: Chelsey Fayerweather



2020 Pepin County Schedule of Events

Please like **Pepin County Tourism** on Facebook, follow **@visitpepincounty** on Instagram, or visit **www.visitpepincounty.com** for updates

January

18-19 Free ice fishing weekend
Statewide • www.dnr.wi.gov

February

1 Pepin Lions Club Ice Fishing Contest
Sportsmans Landing, Pepin
Pepin Lions Club Facebook page

March

7 Mini Putt Putt
(Pepin County Tavern League Safe Ride Fundraiser)
Masonic Hall, Durand

14 St. Patrick's Day Parade • Stockholm

April

18 55th Annual Spring Flood Run
Great River Road • www.flood-run.com

24-25 Durand Area Garage Sales
Durand • www.durandimprovementgroup.org

30 100 Mile Garage Sale
Lake Pepin Area • 100milegaragesale.org

May

1-3 100 Mile Garage Sale
Lake Pepin Area • 100milegaragesale.org

June

5-7 57th Annual Durand Fun Fest
Durand • www.durandimprovementgroup.org

5-7 Spring Fresh Art Tour 10am-5pm
Countywide • www.freshart.org

**6-7 Great River Road Wine Trail –
June Bloom – Wine and Food Event**
Great River Road • www.greatriverroadwinetrail.org

6-7 Free fishing weekend
Statewide • www.dnr.wi.gov

19-20 Arkansaw Creek Park Days • Arkansaw
Arkansaw Fur Fish & Game Club Facebook page

24 Music in the Park • Memorial Park, Durand
www.durandimprovementgroup.org

July

4 4th of July Parade • Stockholm

18 Stockholm Art Fair 10am-5pm
Stockholm Village Park, Stockholm
www.stockholmartfair.org

22 Music in the Park • Memorial Park, Durand
www.durandimprovementgroup.org

31 Blues on the Chippewa
Memorial Park, Durand
www.bluesonthechippewa.com

August

1-2 Blues on the Chippewa
Memorial Park, Durand
www.bluesonthechippewa.com

**26 Music in the Park and Taste of Durand –
The Whitesidewalls Rock n' Roll Revue**
Memorial Park, Durand
www.durandimprovementgroup.org

September

13-14 Laura Ingalls Wilder Days Festival
Pepin • www.lauradays.org

19 55th Annual Fall Flood Run
Great River Road • www.flood-run.com

October

2-4 Fall Fresh Art Tour, 10am-5pm daily
Countywide • www.freshart.org

8-11 Flyway Film Festival
Pepin, Stockholm, Alma
www.flywayfilmfestival.org

31 Trunk or Treat
Main Street, Durand
www.durandimprovementgroup.org

November

7-8 Women's Weekend • Stockholm

**7-8 Great River Road Wine Trail – Holiday Harvest –
Wine & Food Festival** • Great River Road
www.greatriverroadwinetrail.org

27 Arkansaw Creek Park Lighting Ceremony
Arkansaw
Arkansaw Fur Fish & Game Club Facebook page

28 Durand Dazzle Day and Parade • Durand
www.durandimprovementgroup.org

December

5 God Jul: A Stockholm Swedish Christmas
Stockholm • www.stockholmwisconsin.com

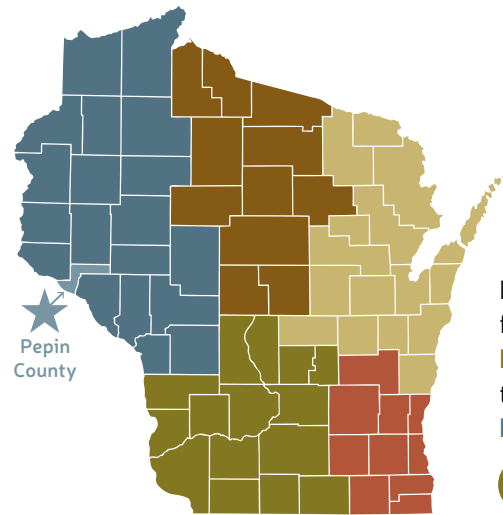
12 A Handmade Holiday
Stockholm • www.stockholmwisconsin.com

**19 Fire of Stockholm –
A Winter Solstice Celebration**
Stockholm • www.stockholmwisconsin.com

These are events known about prior to printing the Visitor Guide.

Table of Contents

2020 Pepin County Schedule of Events	4
Your #VisitPepinCounty Story	6
 Embracing our Historical Roots	8
 The Arts	10
 Dining in Pepin County	13
 Stay	18
 COMMUNITIES:	
Durand	20
Pepin	24
Stockholm	28
Arkansaw	30
Town and Country	31
 Wedding and Special Event Venues	33
Wisconsin Great River Road	34
Fall Colors in Pepin County	35
 Natural Areas in Pepin County	37
 Explore the Outdoors	39
Pepin County Wisconsin General Highway Map	42



Make sure to follow us on **Facebook** & tag us on **Instagram!**



Photography contributed by local photographers, local business owners, visitors, and Travel Wisconsin. Credits have been attributed throughout the guide. Use **#VisitPepinCounty** for a chance to be featured in our visitor guides and social media posts!

Pepin County is not responsible for any photos or content within advertisements or sponsored content.

Cover photograph: Joseph Adams @klapperichmueller while visiting Pepin County

Printing: La Crosse Graphics Inc.

Layout and design: Kristin Mitchell Design, Inc

For more information or additional Visitors Guides, email us at info@co.pepin.wi.us or call 715-672-8665 x116.

www.visitpepincounty.com

Credit: Grace J. Baldrige @gracejaneanne

Welcome to Pepin County

Your #VisitPepinCounty Story



Credit: Grace J. Baldrige @gracejaneanne



Credit: Cole Vautieranne



Credit: Ciara Majkowski



Credit: Brendon Hertz brendonhertz.com



Victoria SJ Campbell @vicsjcampbell



Credit: Steven Date



Credit: Rebecca A. Roeder @im.mrs.brightside



Grace J. Baldrige @gracejaneanne



Credit: Chelsey Fayerweather



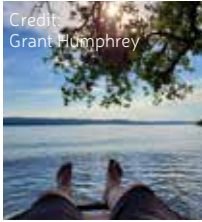
Credit: Grace J. Baldrige @gracejaneanne



Grace J. Baldrige @gracejaneanne



Melissa McWilliams @MissyMc_BeeRevived



Credit: Grant Humphrey



Credit: Chelsey Fayerweather



Credit: Grace J. Baldrige @gracejaneanne



Credit: Tim Gaul



Credit: Bailey Nordby



Annelie Livingston-Anderson @goodturnfarm



Embracing our Historical Roots

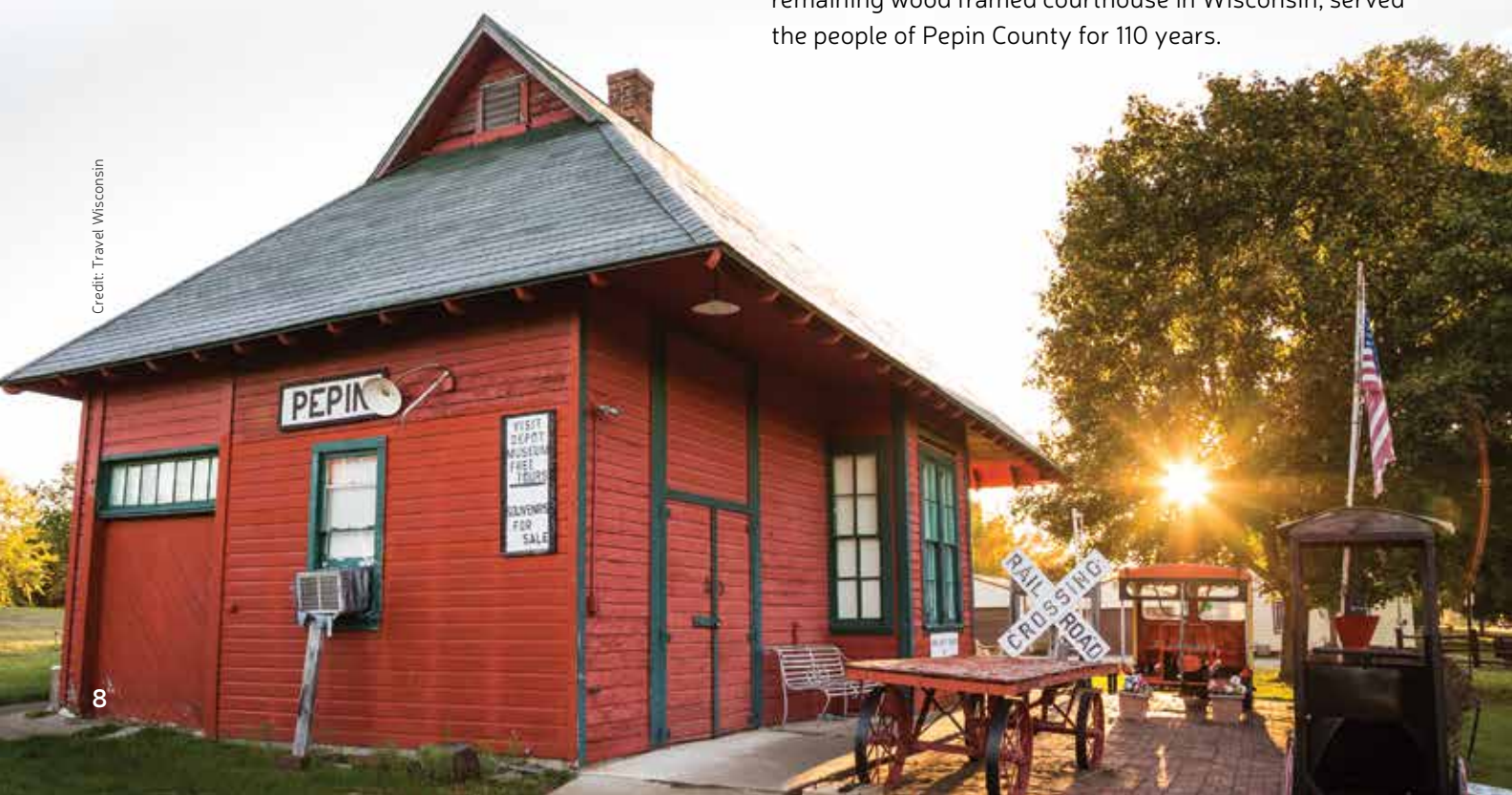
For being the smallest county in the State of Wisconsin, Pepin County has a very rich past filled with historical people, places, and events. Pepin County was created by a special act of the Wisconsin Legislature on February 25, 1858, a mere ten years after Wisconsin became a state. Before that, Pepin County was part of Dunn County, and part of Chippewa County before that. The land comprising Pepin County was attained by the federal government by a treaty with the Dakota Indians in 1837.

Pepin County was originally occupied by American Indian tribes belonging to the Woodlands Cultural Group, including the Oneota, Dakota, and Ojibwa. These individuals left behind village ruins and effigy mounds with broken pottery, arrowheads, animal bones, beads, and seeds which provide us with clues to their ways of life. The Native Americans also passed down an oral history, which includes the “Legend of the Maiden Rock”. Visitors can visit Maiden Rock, now a state wildlife area; the site is said to be the site where an Indian maiden jumped to her death after being forbidden to marry a brave from an enemy tribe.

There were many European explorers to the area, most notably Pierre Pepin and Jean Pepin du Cardonnets who explored and traded throughout the area before becoming the namesake to Lake Pepin, a village, and the county. Father Louis Hennepin was captured by a band of the Assati Sioux (Dakota) from Lake Pepin. Once released, he returned to explore the Chippewa River. Nicholas Perrot built a stockade and trading post on the shores of Lake Pepin. French trappers and traders dominated commerce along the Mississippi River for the next 100 years, despite British attempts to move into the area, and attracted numerous settlers to the area, especially those interested in logging. French Canadians arrived in such numbers, they became the founders of many villages in the area. In Pepin County, they built their homes in and around the Arkansaw-Porcupine region.

Upon the creation of Pepin as a county, the Village of Pepin was the first county seat, and the Wisconsin Legislature appointed Henry D. Barron to be the county’s first judge. The first term of court was held in the spring of 1858. After several moves, the county seat was finally settled in Durand. The stately courthouse, which today is the only remaining wood framed courthouse in Wisconsin, served the people of Pepin County for 110 years.

Credit: Travel Wisconsin



Old Courthouse Museum

315 W. Madison Street, Durand

The last remaining wood-framed courthouse in Wisconsin was converted to a museum in 1985. The structure is listed on both the State and National Registers of Historic Places. The building features the 2nd floor courtroom, six rooms of local history and the old jail next door. The courthouse grounds were the site of a hanging in 1881, as locals took matters into their own hands after two law enforcement officials were killed by outlaw Ed Maxwell. Please call for information about hours and admission charges (715) 672-5423.



Pepin Depot Museum

Pepin Village Park—Hwy 35

Restored original Pepin railroad depot, full of railroad and steamboat memorabilia. Volunteer staff on hand to help bring the past alive. Souvenirs available. Located on the National Scenic Highway 35 in Laura Ingalls Wilder Park. Hours of operation: May – October: Daily 10 am – 4 pm

Stockholm Museum

Spring Street, Stockholm

Visitors from around the world have enjoyed the Stockholm Museum's displays and artifacts. Swedish tourists are particularly entranced that such a small a community should devote as much care and attention to its history. The museum is open to the public from 12 pm – 5 pm every weekend from April 1st – the first weekend in December. It is also open most weekdays in the village high season April 15 – October 31st. The museum offers t-shirts, historical postcards and other souvenirs for sale.

Little House Wayside & Laura Ingalls Wilder Museum

N3238 Cty Rd CC and Hwy 35, Pepin

Come see a replica of Laura Ingalls Wilder's log home as described in her books at Little House Wayside. Then visit the Pepin Historical Museum to see items relating to Pepin's history as well as items from the pioneer era of Laura Ingalls Wilder. Contact 715-513-6383 for more information.



LAURA INGALLS WILDER MUSEUM & GIFT SHOP
306 Hwy 35 - Pepin, WI

VISIT US!
OPEN 7 DAYS A WEEK
MAY THROUGH OCTOBER
10 A.M. - 5 P.M. DAILY

Learn about the history of this beautiful region and the era in which Laura lived
www.LauraIngallsPepin.com

Mark your calendar!
Laura Ingalls Wilder Days
September 12 & 13, 2020
www.LauraDays.org

Pepin County's Preserved One Room Rural School House



W8851 County Road N
Pepin, WI 54759
715-442-2295
www.littleplumplace.org



OLD PEPIN COUNTY COURTHOUSE

Last remaining wood courthouse in Wisconsin. Constructed in 1873-74, it served as the Pepin County Courthouse until 1985. Listed on the State and National Registers of Historic Places.

WASHINGTON SQUARE
DURAND, WISCONSIN

Summer hours June - August • Open year round by appointment • Free Admission

Pepin County Historical Society

www.oldpepincountycourthouse.org • 715-672-5423



The Arts

The landscape of Pepin County has been inspiring the cultural arts for centuries. Pepin County continues to attract and nurture talented artists of all varieties who can be found scattered throughout our rural landscape. On the west end of the county, the Village of Stockholm is considered one of the most vibrant and cultural scenes in Wisconsin. Along the north shore of Lake Pepin, the Village of Pepin businesses offer original hand-made work by local craftspeople and the village hall displays the art work of locals. The City of Durand has an abundance of murals throughout the downtown district and has a recently discovered century old circus lithograph in the Corral Bar. We welcome you to explore Pepin County to see if you can find your new favorite artwork or inspiration to create your own.

Art Related Events and Venues

Fresh Art Tour

The Fresh Art Tour is a semiannual event held the first full weekend of both June and October; this self guided tour will take you through Pepin, Buffalo, and Pierce Counties. Take in the beautiful artwork of over two dozen local artists who participate in these events and consider purchasing artwork to take home with you.

Music in the Park Summer Series

Sponsored by the Durand Improvement Group and local businesses, the Music in the Park Summer Series is held the fourth Wednesday of the month throughout the summer at the Memorial Park in Durand. Bring your family, friends, and neighbors and enjoy an evening of lovely tunes. Don't forget your dancing shoes!

ART GALLERIES & SHOPS:

Abode Gallery & Design
Antique Future
Bnox Jewelry Studio
Dougiland Studio
Indigo Swan
Matt Anderson
Purple Turtle Artisan Collective
Scrap-A-Latte
Smith Brothers Landing
T + C Latané

Stockholm Art Fair

The Stockholm Art fair has been bringing together artists to display their paintings, jewelry, clay, glass, sculpture, fiber, wood, leather, photography, and other types of art in Stockholm for over 40 years. The event is held at the Stockholm Village Park the 3rd Saturday in July.

Blues on the Chippewa

This free music festival brings musicians and music lovers together from across the country the first weekend in August. The organizers seek to promote positive change through the power of music and showcase the region's wealth of musical artists. Come relax and listen to the blues at the Memorial Park in Durand.

Laura Days

Experience the cultural arts of the past during this celebration held the second weekend of September every year. The festival provides opportunities to experience the arts by including a traditional crafts demonstration area, participants in traditional clothing, and a fiddling contest for youth. The event is held at the Village Park in Pepin.

Flyway Film Festival

The Flyway Film Festival takes place each October, the event brings a collection of new independent films of varying genres to the Lake Pepin area, with film showing venues in Pepin and Stockholm.

WideSpot Performing Arts Center

Hidden above shops in Stockholm, the WideSpot Performing Arts Center welcomes you to partake in the talented musical guests, comedy artists, theater productions, and performance arts. The Goin' Coastal Radio Show productions are a local favorite.

For additional information about artists, galleries, and art related events: www.visitpepincounty.com

Credit: Beverly Borgstrom @roadtripwithbevy





**Smith Brothers
Landing**
1 1/2 blocks east of The Harbor View
on beautiful Lake Pepin

Decorative Metal Work • Perennials • Hosta

Dave & Jane Smith • Phone: (715) 442-2248
or Cell (715) 495-3789 • (715) 279-1704
Email: smbriand@riverlandcom.net • W9557 ST 35 • Pepin, WI 54759



The Purple Turtle
ARTISAN COLLECTIVE
Stockholm, WI
WI Great River Road
www.ThePurpleTurtleArts.Com

FEATURING
**LOCAL &
REGIONAL
FIBER, ART
& YARN**



Tom & Catherine Latané
412 2nd Street Pepin, WI
715-442-2419
tclatane@gmail.com
www.latanepepin.com
Fine metalwork




Indigo Swan
JEWELRY & FINE ART
PICTURE FRAMING & CLOTHING

Award Winning Artisans
N2015 Spring Street
Stockholm, WI
651-231-2266
IndigoSwanGallery@gmail.com
indigoswangallery.com



22nd Annual



**FRESH ART
TOURS**

2 self-guided art tours throughout
Pepin & southern Pierce Counties in West Central WI



FreshArt.org

**JUNE 5,6,7
and OCT. 2,3,4 2020**

47TH ANNUAL



**Saturday
July 18, 2020
10am to 5pm**

Village Park
Stockholm, WI

Fine Art ▲ Food ▲ Music
stockholmartfair.org



Call or Text: 715.495.1163 • 217 West Main Street • Durand, Wisconsin
 Email: sandianderson8385@gmail.com • stargazersdurandwi.com
"We Help Make Your Creative Dreams Come True."



**St. Vincent de Paul
THRIFT STORE**
 825 E. Prospect Street
 Durand, WI 54736
 Store Ph: 715-672-8975 • Help Line: 715-672-8617
 Sunday & Monday: CLOSED
 Tuesday - Friday: 10 a.m. - 5 p.m.
 Saturday: 10 a.m. - 4 p.m.
 Clothing, household items, books, knick-knacks, shoes, furniture and more!




Rolling Greens Golf Course Provides:

- 9 Hole Scenic Golf Course
- Putting Green
- Driving Range
- Lessons and Leagues
- Bar and Grill
- Pro Shop
- Large Clubhouse for Outings

Business Hours 8am to Dusk beginning April 1 to Oct. 31
 1324 3rd Ave West, Durand, WI 54736
 (715) 672-8139 • rggolcourse.com
 Check out our website for Specials and Directions




Tin Roof Boutique in Pepin will be your favorite spot on the Great River Road for you shopping and gift giving needs.

Like us on Facebook at [tinroofpepin](#) for all the latest.



202 3RD ST. • PEPIN, WI • 715-829-8080



BluesOnTheChippewa.com



A performing arts center where tradition meets innovation.
 Music, theater, and more.

Check out shows and buy tickets @
www.widespot.org

Spring Street Arts Building
 Stockholm, Wisconsin **widespot**
 Performing Arts Center



Dining in Pepin County

Sweet or salty, mild or spicy, Pepin County will satisfy whatever you're craving. From quaint cafés and charming hometown restaurants to a Mediterranean style winery and upscale establishments, we have an ideal atmosphere for almost every occasion. You can even take a trip down memory lane at an old school drive-in.

With our variety of establishments, there's a dish to appease nearly every taste bud. Your sweet tooth will be delighted with the pastries and pies. When in doubt, you can stick with classic burgers and fries. Feeling adventurous? Spice things up with a Bloody Mary...or just put pineapple on your pizza. See the dining directory for available dining options and to learn about some of our favorites! Your taste buds will surely thank you!



PANTHER
DRIVE-IN

1018 E. Prospect St.
Durand WI 54736
715-672-5564

Burgers, Fries, shrimp wraps, chicken,
Malts & Shakes, Cyclones,
Tropical Sno Hawaiian Shaved Ice

Carbops
Frosted mugs of rootbeer
Twist, Choc., Van., & Flavor Burst Cones



Est 1980
"Best from Scratch"

Harbor View Café

314 First St. | PO Box 385
Pepin, WI 54759
www.harborviewpepin.com
715-442-3893
Check us out on Facebook
bestfromscratch@harborviewpepin.com

Garden Pub & Grille

Pepin's Fun Destination

12 Flavors of ice cream
Homemade Fudge & Candies
Located next to Garden
Pub & Grille



Hwy 35, Pepin 54759 🍷 Outdoor Bar and Grille
Open April to October 🍷 On scenic Hwy 35 "The Great River Road"
715-442-5500 🍷 www.pepingardenpub.com

Dining in Pepin County

ARKANSAW AREA

For Pete Sake's

N6210 Cty Rd N, Arkansaw
715-285-5003

The Rec Hall

N6219 Cty Rd N, Arkansaw
715-285-5459

DURAND AREA

Alex's Pizza

119 W. Main St., Durand
715-672-4303

The BakeShop & More

216 W Main St., Durand
715-672-8775
bakeshopandmore.com

Bodhi's Saloon

209 W Main St., Durand
715-672-5991

Corral Bar & Riverside Grill

318 W Main St., Durand
715-672-8874
corralbarandriversidegrill.com
Homemade foods & soups, full menu,
daily breakfast, lunch, & dinner
specials, Friday fish fry, outside
dining on large deck overlooking
the Chippewa River.
See ad on pages 22-23.

Durand Bakery

112 W Main St., Durand
715-672-8780

Hide-A-While Bar

W1505 Albany D, Mondovi
715-875-4541

The Lone Pine

W2660 Hwy 10, Mondovi
715-672-5574

Panther Drive-In

1018 E Prospect St., Durand
715-672-5659
Traditional drive-in restaurant
serving sandwiches, fries, wraps &
desserts. Featuring car-side delivery
by carhops. See ad on page 13.

Perkz Café

311 W Main St., Durand
715-672-3634
www.perkzcafedurand.com/

Rolling Greens Golf Course

1324 3rd Ave W, Durand
715-672-8139
rggolfcourse.com
Sandwiches, pizza, appetizers.
Outdoor seating available.
See ad on page 12.

Rooster Tail Bar & Grill

106 W Main St., Durand
715-672-3640

Ron & Angie's Northside Bar & Grill

N5425 Cty Rd H, Mondovi
715-926-4711

The Spot Bar

306 W Main St., Durand
715-672-8001

The Cell Block Lounge

200 W Main St., Durand
715-672-8580

Kingfisher

214 W Main St., Durand

McDonald's

604 Hwy 10 E, Durand
715-672-4332
www.mcdonalds.com

Dairy Queen

1101 E Prospect St., Durand
715-672-8013
www.dairyqueen.com

Subway

300 W. Prospect St., Durand
715-672-3131
www.subway.com

Hot Stuff Pizza/Cenex

420 2nd Ave E, Durand
715-672-8323
www.hotstuffpizza.com

Durand Fresh Market

520 W Main St., Durand
715-672-5971
durand-fresh-market.business.site

Durand Brewing Company

N6649 State Hwy 25, Durand.
715-283-4040
Pepin County's only microbrewery.
Beer, soda, pizza and light snacks
available. Deep water well for the
purest beer. Veteran owned and
operated. Family, food and dog
friendly. See ad on page 36.

PEPIN AREA

The Bear's Den

206 Lake St., Pepin
715-442-3451

Garden Pub & Grille

210 3rd St. (Hwy 35), Pepin
715-442-5500
www.pepingardenpub.com
Outdoor open-air bar and grille with
live music. Serving pizza, burgers,
chicken, entrée salads.
See ad on page 13.

Harbor View Café

314 1st St., Pepin
715-442-3893
www.harborviewpepin.com
Established in 1980.
Environmentally-minded, food
sourced locally as much as possible.
Chalkboard menu changes daily.
See ad on page 13.

Homemade Café

809 3rd St. (Hwy 35), Pepin • 715-941-1164

The Pickle Factory Waterfront Grill

205 1st St., Pepin • 715-442-4400 • www.pepinpicklefactory.com/

A well established 30 year old destination dining facility right on the shores of beautiful Lake Pepin in Pepin, WI. Open 6 days a week in spring summer and fall and weekends during the winter months. See ad on page 17.

Third Base Bar

409 3rd St., Pepin • 715-442-2561

Villa Bellezza

1420 3rd St. (Hwy 35), Pepin • 715-442-2424 • www.villabellezza.com

Mediterranean-inspired selections for lunch, dinner or light afternoon nosh with a glass of wine in the open air of the Piazza or fireside in the tasting room. Featuring salads, panini, pasta dishes & pizzas made with housemade dough.

The 404 Coffee Shop

404 1st St., Pepin • 715-215-0132

E & S Fresh Market

410 2nd St., Pepin • 715-442-2441 • eandsfreshmarket.com

A full-line grocer with a small town country atmosphere. Featuring a wide array of homemade sausages. This little store has all your grocery, produce and fresh meat needs. See ad on page 15.

The Shoreline Pub

310 1st St., Pepin • 715-442-2232



Hometown grocery with fresh meats and produce!
Located on 2nd St. in Pepin, WI • (715) 442-2441
eandsfreshmarket.com



River Road BP

300 Third Street
Pepin, WI
(715) 442-3033

Bait • Tackle • Liquor • Beer
Made to order Pizza and Subs

Large selection of Deli items
for breakfast, Lunch and Dinner

STOCKHOLM AREA

Stockholm Village Bistro & Bakery

N2049 Spring St., Stockholm
715-442-2056

Gelly's Too

W12128 WI-35, Stockholm
715-442-2555

Stockholm Pie Company & General Store

N2030 Spring St., Stockholm
715-442-5505
www.stockholmpieandgeneralstore.com

Maiden Rock Apples, Winery & Cider

W12266 King Ln., Stockholm
715-448-3502
www.maidenrockappleswinerycidery.com

A to Z Produce and Bakery

N2956 Anker Ln., Stockholm
715-448-4802
atozproduceandbakery.com

Hours are subject to change, check websites or call for more information.

DURAND BREWING COMPANY

Pepin County's Only Microbrewery

FAMILY, FOOD AND DOG FRIENDLY
BEER, SODA, PIZZA AND LIGHT SNACKS
AVAILABLE

DEEP WATER WELL FOR THE PUREST BEER

VETERAN OWNED
AND OPERATED

N6649 STATE HWY 25
DURAND, WI 54736
715.283.4040



Pepin County Tavern League

COMPANY	PHONE	ADDRESS	CITY	ZIP
Bodhi's Saloon	(715) 672-5991	209 W. Main Street	Durand	54736
Club 10 Entertainment	(715) 672-5681	W4570 US Hwy 10	Durand	54736
Corral Bar & Riverside Grill <i>Open daily at 5 am. See our ad on pages 22-23 • www.corralbarandriversidegrill.com</i>	(715) 672-8874	318 W. Main Street	Durand	54736
Durand Brewing Company	(715) 283-4040	N6649 WI-25	Durand	54736
Durand Rod & Gun Club <i>See our ad on page 36</i>	(715) 283-4436	N7312 Street Hwy 25	Durand	54736
Eau Galle Saloon & Grill	(715) 283-4221	N383 County Road D	Eau Galle	54737
For Pete Sake's Bar & Grill <i>Open every day at 6 am. Great breakfast and burgers.</i>	(715) 285-5003	N6210 County Road N	Arkansaw	54721
Hide-a-While Bar	(715) 875-4541	W1505 Albany D W	Mondovi	54755
JR's Mainstreet Bar <i>Home of the \$2 can beer</i>	(715) 495-5611	124 Pine Avenue East	Plum City	54761
The Lone Pine Grill	(715) 672-5574	W2660 US Hwy 10	Mondovi	54755
Nelson Hotel Bar & Grill	(715) 673-4424	S114 Main Street	Nelson	54756
Perkz Café www.perkzcafedurand.com	(715) 672-3634	311 W. Main Street	Durand	54736
The Pickle Factory Waterfront Grill <i>See our ad on page 17 • www.pepinpicklefactory.com</i>	(715) 442-4400	205 1st Street	Pepin	54759
The Rec Hall <i>Excellent homemade pizzas, sandwiches and great drinks. Find us on Facebook.</i>	(715) 285-5459	N6219 County Road N	Arkansaw	54721
Rolling Greens Golf Course <i>Scenic 9 hole golf course with bar and grill. Find us on Facebook See our ad on page 12 • www.rggolfcourse.com</i>	(715) 672-8139	1324 3rd Avenue W.	Durand	54736
Rooster Tail Bar and Grill	(715) 672-3640	106 W. Main Street	Durand	54736
Seymore's Northside Bar & Grill	(715) 926-4711	N5425 County Road H	Mondovi	54755
Spot Bar <i>Good People~Good Drinks~Great Times</i>	(715) 672-8001	306 W. Main Street	Durand	54736
Third Base Bar	(715) 442-2561	409 3rd Street	Pepin	54759
Twin Bluff Bar	(715) 673-4700	S274 Hwy 35	Nelson	54756
Werner's Top Hat Bar	(715) 673-4782	N204 Main Street	Nelson	54756



\$1,000 in Scholarships awarded annually



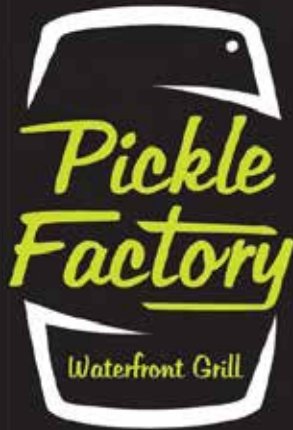
The Mini Putt Putt (Safe Ride fundraiser) is always held the 1st Saturday in March at the Masonic Hall in Durand, WI.



Follow us on Facebook



Great Food - Great Friends
On the Shores of Scenic Lake Pepin!

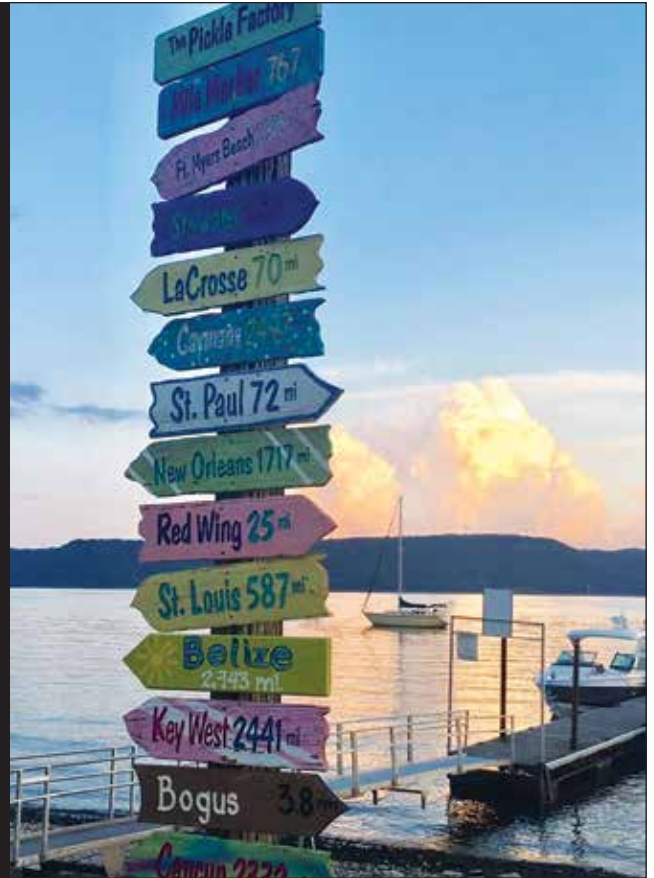


- 280 foot dock for our boating guests
- Check website for schedule of live music on the waterfront
- Open 6 days a week during summer & weekends during winter months

Follow us on

715-442-4400

pepinpicklefactory.com



Harbor Hill Inn & GENERAL STORE

Visit us in Pepin at the Harbor Hill General Store for Gifts, Games and Toys from around the world and here at home—plus Pepin Sweatshirts, Hats, Tees & Souvenirs. Our store is brand new and we look forward to serving you.

If you plan to stay in the Pepin area, we invite you to enjoy the Award Winning lodging of our Harbor Hill Inn. Overlooking the Mississippi River and Lake Pepin.

We are #1 on TripAdvisor.

We look forward to welcoming you.

STORE: 309 Great River Road • INN: 310 2nd Street
Pepin, WI • www.harborhillinn.net • 715.600.2466





Stay

Find the perfect getaway location in Pepin County. Our communities offer a variety of lodging options to accommodate your stay, whether it be for a day, weekend, week, or longer. Hotels and motels tend to be located along major highways for easy access to other area destinations. Our expanding vacation rental market has helped to provide additional places for weary travelers to kick back, relax, and enjoy the best Pepin County has to offer.

Credit: Grant Humphrey



PROSPECT PLACE

Durand has a beautiful and unique vacation rental situated in a perfect spot to enjoy all of Pepin County. The historic Pilgrim Congregational Church was dedicated in October of 1880 after lumber was brought by boat from Eau Claire the year before. Original wood floors and stained glass throughout this cathedral-style renovation has now become Prospect Place, a wonderful gathering space to spend time with family and friends or to book a retreat or holiday event.

Prospect Place is located blocks from Durand's downtown shops and restaurants along the Chippewa River, with easy access to kayaking, bike trails and golf. Amenities include two private bedrooms, a full kitchen stocked with cooking essentials, central heat and air conditioning, laundry, Wi-Fi, and a smart TV. Locally roasted coffee comes with every stay, as well bed and bath linens are included.

Special packages are available to include wine and cheese, bike and brew, kayak rental, and shopping weekends where we love to partner with other small businesses in Pepin County. Come and see for yourself!



Find us on Facebook or email prospect.place.durand@gmail.com for more info and current happenings.





Breakfast



Free WiFi



Fitness Center



Handicap Accessible



Laundry



Pet Friendly



Kitchen



Bedrooms



Beds/Pullout Couches



Bathrooms

HOTELS

Cobblestone Inn & Suites

325 W Prospect St., Durand
www.staycobblestone.com/wi/durand/
715-672-5057
(31)

Pepin Motel

305 Elm St., Pepin • 715-442-2012
www.lakepepincampground.com
(32)

Great River Amish Inn

311 3rd St., Pepin • 715-442-5400
www.greatriveramishinn.com
(7)
See ad on page 41.

RENTAL

Prospect Place • Durand

www.evolvevacationrental.com/433324 • 608-658-3828
(2) (7) (1)
Stay in a restored church!
See ad on page 18.

The Prairie House • Pepin

www.sleeppepin.com
715-442-2050
(2) (5) (1)
Shared house.
See ad on page 41.

Lakefront Lake Pepin Cottage

Stockholm • airbnb.com
(2) (4) (1)

Black Walnut Cottage

Stockholm • airbnb.com
(3) (5) (2)

Lake Port • Pepin • airbnb.com

(3) (5) (2)

Stockholm Guest House

Stockholm • airbnb.com
(3) (4) (1)

Villa Del Lago • Pepin • airbnb.com

(4) (6) (1)

Scenic View Cottage • Pepin

airbnb.com
(2) (3) (1)

Cabin Next to Winery • Pepin

airbnb.com
(3) (5) (1)

Carriage House Inn • Stockholm

airbnb.com
(1) (2) (1)

A Dubé STAY • Stockholm

www.adubestay.com • 952-250-3265
(4) (9) (3)

Whitehouse Inn • Stockholm

www.whitehousinnstockholm.com
(952) 250 3265
(3) (3) (2)

Eagle's Cliff Vacation Rental

Stay and Fish • Pepin • 319-350-1838
www.eaglescliff-pepin.com
(5) (10) (3)
Rental only included with fishing guide

Little Green Farmhouse • Stockholm

www.littlegreenfarmhouse.net
763-568-8687
(4) (6) (2)

The Glass Palace • Pepin

www.airbnb.com • 715-514-9115
(2) (3) (1)

Harbor Hill Inn • Pepin

www.harborhillinn.net
715-600-2466
(3) (4) (4)
See ad on page 17.

Harbor Hill Inn - Carriage House

Pepin • www.harborhillinn.net
715-600-2466
(2) (3) (1)
See ad on page 17.

Spring Street Inn • Stockholm

www.springstreetinnwi.com
715-204-2410
(2) (4) (2) (kitchenette)

Lake View Landing • Pepin

www.lakeviewlandingpepin.com
402-953-8617
(4) (5) (2)

The Pepin Cottage • Pepin

www.pepincottage.com • 715-495-0745
(3) (6) (1)

Great River Cottage #1 • Pepin

www.greatrivercottage.com
651-380-9380
(3) (8) (1)

Great River Cottage #2 • Pepin

www.greatrivercottage.com
651-380-9380
(1) (1) (1)

Pleasant Corner

Schoolhouse Art Retreat

Stockholm • airbnb.com
(1) (1) (1)

Lost Creek Retreat • Pepin

airbnb.com
(2) (2) (1)

The Pepin House • Pepin

stockholmacesllc.com
(4) (8) (3)

Pepin Vacation Rental • Pepin

homeaway.com
(4) (9) (2)

Lake Pepin Retreat • Pepin

715-495-6375
(3) (4) (2)

Disclaimer: Based on information provided by rental owners. Additional rentals may be on www.airbnb.com, www.vrbo.com, or other rental sites.



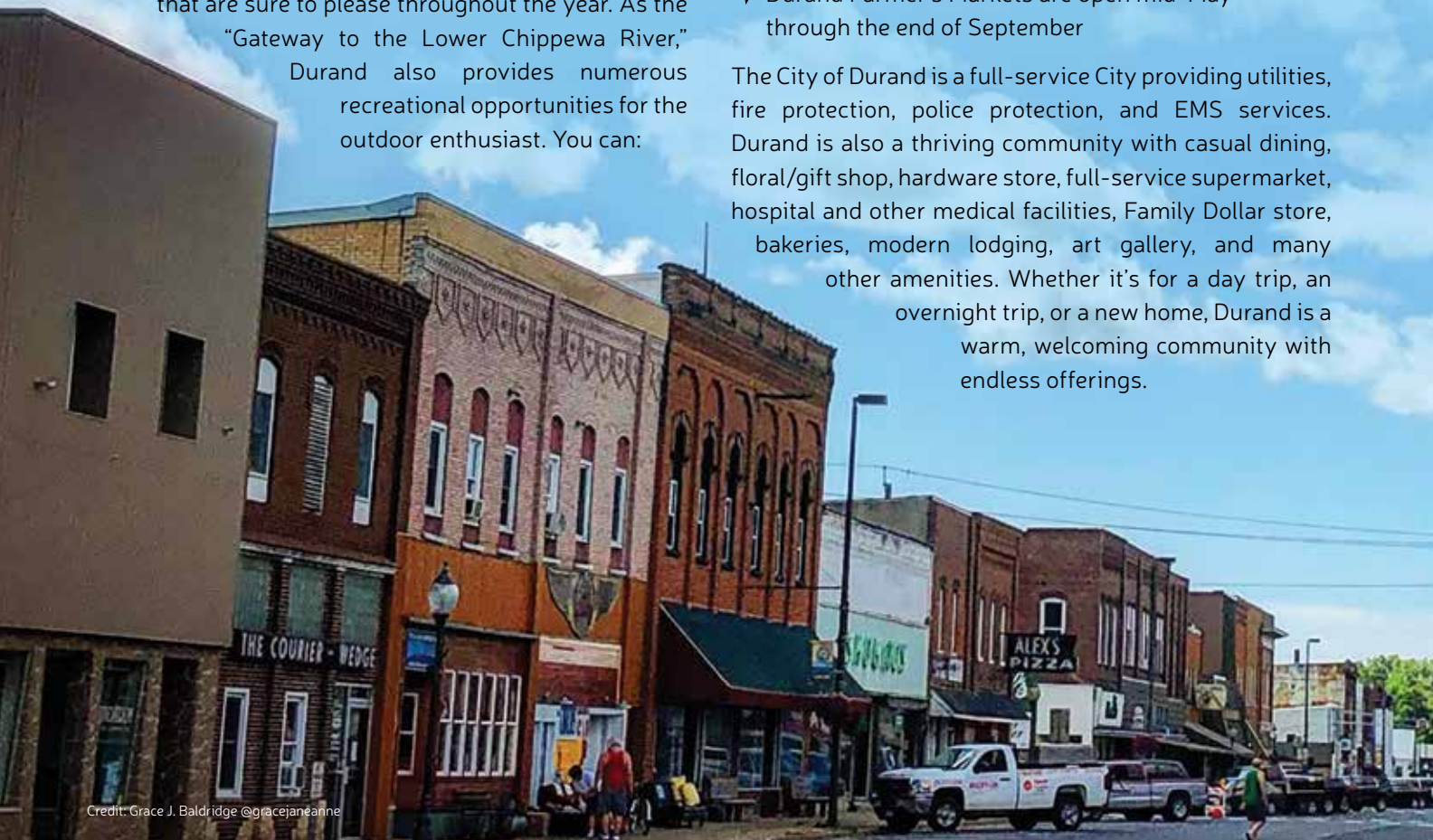
Durand

“On the banks of the Chippewa.” The City of Durand is the county seat of Pepin County, Wisconsin. We invite you to enjoy a relaxing evening of music and entertainment at any one of the Music in Memorial Park events or take advantage of our world-class music festival “Blues on the Chippewa” held in August. Attend our annual summer festival “Durand Funfest” at the beginning of June and our “Durand Dazzle Holiday Parade” the Saturday following Thanksgiving.

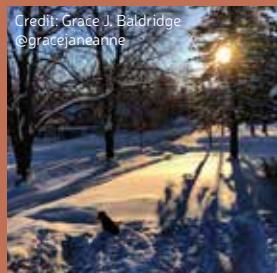
The City of Durand has many other events and festivities that are sure to please throughout the year. As the “Gateway to the Lower Chippewa River,” Durand also provides numerous recreational opportunities for the outdoor enthusiast. You can:

- ✔ Enjoy a challenging round of golf
- ✔ Boat, tube, canoe or kayak down the Chippewa River
- ✔ Take advantage of the numerous fishing and hunting opportunities available
- ✔ Camp at Tarrant Park on the Chippewa River State Trail
- ✔ Take a train ride into the Tiffany Bottoms on a birding expedition
- ✔ Durand Farmer’s Markets are open mid-May through the end of September

The City of Durand is a full-service City providing utilities, fire protection, police protection, and EMS services. Durand is also a thriving community with casual dining, floral/gift shop, hardware store, full-service supermarket, hospital and other medical facilities, Family Dollar store, bakeries, modern lodging, art gallery, and many other amenities. Whether it’s for a day trip, an overnight trip, or a new home, Durand is a warm, welcoming community with endless offerings.



Credit: Grace J. Baldridge @gracejanneanne



Credit: Grace J. Baldridge @gracejanneanne



Credit: Katie Willis @simplywillis



Photo credit: Steve Carlson

The City of Durand has come a long way since the early pioneer days when logging and steamboats reigned throughout the lower Chippewa River Valley. We recommend visiting the Old Pepin County Courthouse Museum to learn about the robust history of the area and its residents.

In 2018, the Durand-Arkansas School District finished renovating their athletic field complex with generous donations from Bauer Built Inc. and other donors from the community. The land was originally donated to the City of Durand by John and Lillian Wayne and was later transferred to the school to provide recreational facilities within Durand. If you get the chance to be a spectator at a sporting event, such as a football game or track invitational, we hope you will enjoy the state-of-the-art facility.



The Durand Improvement Group is a local organization that strives to inspire the community as it attempts to attract new businesses through collaboration with community businesses and individuals. The group is active in planning community events for both residents and tourists.

The Chippewa River remains a focal point of the community, providing numerous recreational activities. Durand is a thriving community with a strong industrial base, excellent schools, and the only hospital in the county. Visitors can find all they need within the City of Durand; stop in and visit!



BUSINESSES & THINGS TO DO IN DURAND:

DINING

Alex's Pizza
BakeShop & More
Bohdi's Saloon LLC
Cell Block Lounge
Corral Bar & Riverside Grill
Dairy Queen
Durand Bakery
Kingfisher
McDonalds
Panther Drive-In
Perkz Café
Roostertail Bar & Grill
Spot Bar
Subway

EVENTS

Community Wide Garage Sale
Durand Funfest
Music in the Park
Blues on the Chippewa
Dazzle Day Holiday Parade

OUTINGS

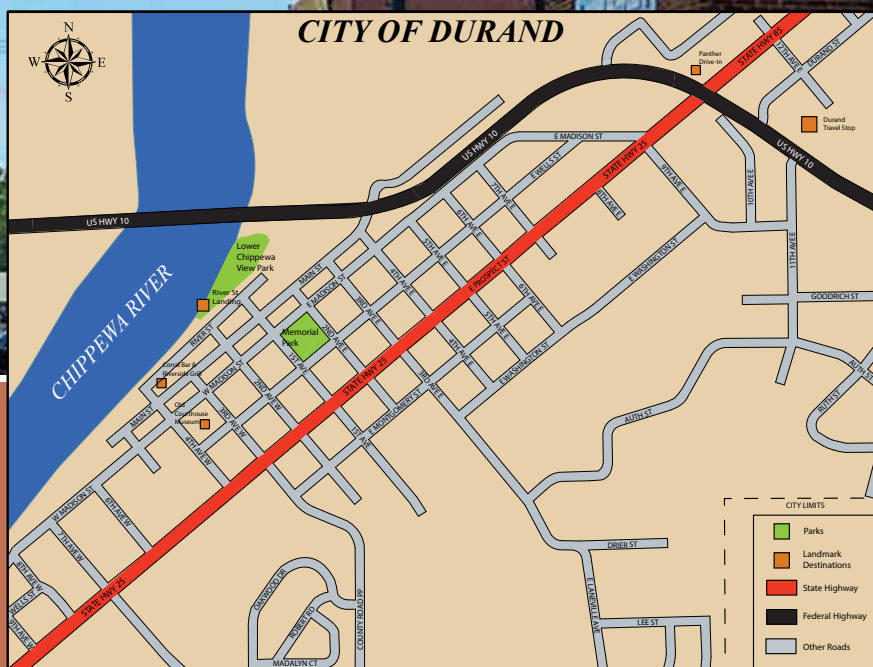
Chippewa River State Trail
Club 10 Entertainment Center
Old Pepin County Courthouse Museum
Rolling Greens Golf Course
Tarrant Park

SHOPPING

The Cottage
Durand Fresh Market
Durand Smokehouse
Eau Galle Cheese Factory
Family Dollar
Heike Pharmacy
Maloney's Baloney
Ryan's Sport Shop
St. Vincent de Paul's Thrift Shop
Stargazers Variety, Antique, and Consignment
Sunny Skies CBD
Zeal Wellness

OTHER BUSINESSES

Bauer Built Inc.
Countryside Cooperative
Gas Stations (4)





CORRAL BAR & RIVERSIDE GRILL

Family owned and operated restaurant featuring a full menu of hearty and homemade Wisconsin favorites. Featuring daily specials for breakfast, lunch, and dinner, the kitchen is open every day of the year from 5 am to 10 pm. Enjoy your meal or drinks from the large deck overlooking the Chippewa River or simply stop in and gaze at the historic Great Anglo-American Circus lithograph in the Orton room adjoining the spacious dining area. Marge Berger family, staff, and current owners Lori, Sharon, and Karen are proud to be serving you every day since 1977 and would like to thank you for your patronage and invite you to come dine with them soon for a “real taste of Wisconsin.”



318 West Main Street, Durand, Wisconsin • (715) 672-8874





When the owners of the Corral Bar and Riverside Grill were expanding their dining area in 2015, they discovered an original lithograph poster advertising the Great Anglo-American Circus coming to Durand on August 17, 1885. Upon this discovery, efforts were taken to research and preserve the lithograph so that this piece of history can be enjoyed for years to come!

The 9 foot high by 55 foot long lithograph is believed to be the only remaining circus advertisement billboard for the Great Anglo American Circus, featured in the Smithsonian and the Atlas Obscura. Across the top of the lithograph, one will notice the major attraction of the event, featuring Miles Orton and little Allie and Bernard forming a human tower and balancing on top of a bareback horse running at full speed. As one would expect, this was a sight to be seen and attracted large crowds. We hope you will stop in Durand for a bite to eat, a drink, and to admire this unique piece of local, state, and regional history.

The room where the mural was discovered has been named the Orton Room in honor of Miles Orton, the owner of the Great Anglo-American Circus. The space featuring the lithograph can accommodate 80 to 100 people and is available for special events such as anniversaries, birthdays, class reunions, retirements or other parties. Events can be scheduled by calling (715) 672-8874, ask for Lori, Sharon, or Ron. For your convenience, the Orton Room is set up with a 5 foot by 10 foot screen and projector as well as Chrome Cast and Apple TV.

We recommend calling ahead if you would like to stop in and marvel at the lithograph as the room will not be available when occupied or being prepared for private parties. If interested in hearing the history concerning the circus poster, call Ron at (715) 495-9835 to schedule a time.

corralriverside@nelson-tel.net • www.corralbarandriversidegrill.com





Pepin

The Village of Pepin is perfectly situated on the shores of Lake Pepin with beautiful bluffs forming a scenic vista in all directions. Today's visitor will find a wide variety of dining options, an award-winning winery, one of the coolest film festivals in the world, and tributes to the local history.

Based on the location, it is no surprise that early pioneers were optimistic that their little village would transform into a flourishing community. The settlers were quick to build hotels and stores to support steamboat traffic along the river in the 1850's. The railroad was constructed in 1886. This provided greater access to urban markets and expanded the areas fishing industry which was an important source of income in the winter when the rivers froze up. By the turn of the century, the early settlers had diversified the local economy as the community supported a few sawmills, a creamery, the famous Pepin Pickle Company, a pearl button works, and a blacksmith who made plows for local farmers.

Over time, the Village of Pepin has preserved history and the small-town character of the community. The original Pepin Train Depot was relocated to the Village Park in the 1980s, it now serves as a museum of the community's history. A museum and festival are held in honor of the designation of Pepin as being the birthplace of the beloved children's author, Laura Ingalls Wilder. T + C Latané will be sure to bring you back in time with their custom metalwork; Tom continues the tradition of blacksmithing while his wife makes tin cookie cutters in a variety of shapes.

Many of the historic buildings remain in Pepin and can be found along streets running parallel to Lake Pepin, including First, Second, and Third Streets. Third Street is better known as being Highway 35 or the "Wisconsin Great River Road". Scattered throughout these streets, one will encounter a mix of specialty shops with casual lakeside clothing, gifts and memorabilia to remind you of your trip to Pepin.



Credit: Pepin Area Community Club



Credit: Travel Wisconsin



Credit: Steven Date



Pepin is a perfect place to stop for a bite to eat, foods for every palate and price point can be found throughout the village. Start your day with a coffee enjoying views of the Pepin Marina, grab a burger at one of the local pubs for lunch, and end your evening at one of the restaurants featuring handcrafted meals made with local ingredients. Most of the casual and fine dining options in Pepin offer both indoor and outdoor seating, so take in the sun with a lake or garden view when the weather is cooperating.

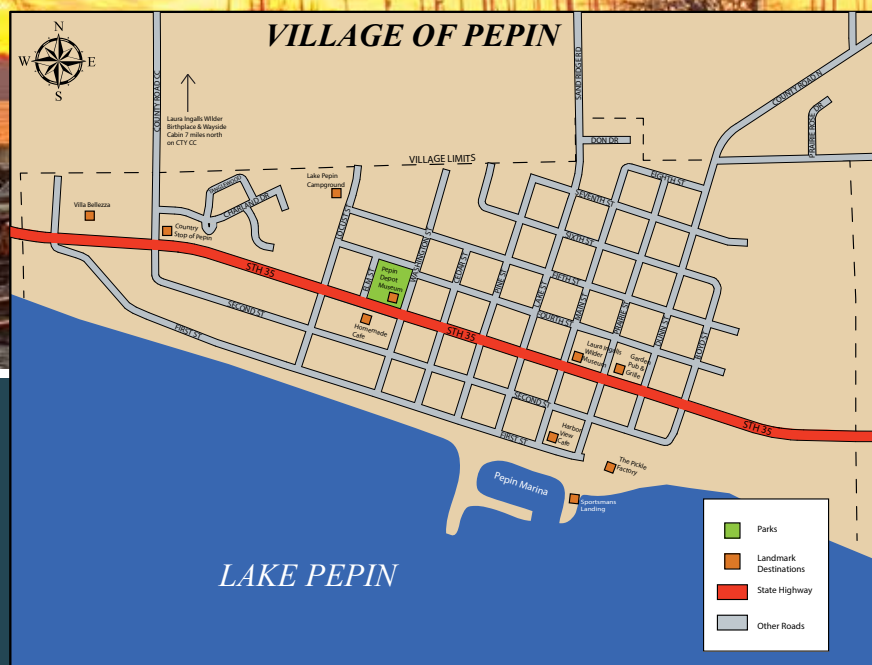
Whether you are visiting for the night, weekend, or an extended stay Pepin can accommodate your getaway! Choose from one of the community's locally owned hotels, lovely vacation rentals, or the full-service campground. Pepin is known for their hospitality and has been working to expand the accommodations available to visitors.

Photo credit: Travel Wisconsin



For those who come for the water, the Village of Pepin features a public boat landing with a nearby fish cleaning station, a public beach, sailing excursions, and a marina with 150 slips and transient docking. The shores of Lake Pepin await your visit!

Snap a photo in one of the many big chairs located around the Village of Pepin and share it with us by tagging #VisitPepinCounty



Welcome to Pepin County

BUSINESSES & THINGS TO DO IN PEPIN:

DINING

404 Coffee Shop
Garden Pub & Grille
Harbor View Café
Homemade Café
il Forno Ristorante at Villa Bellezza
The Bear's Den
The Pickle Factory
The Shoreline Pub
Third Base Bar

OUTINGS

Captain Rob's Cruises
Eagle's Cliff Fishing Guide Service
Lake Pepin
Laura Ingalls Wilder Museum
Pepin Beach
Pepin Marina
Pepin Sportsman's Landing
Pepin Train Depot Museum
Sail Pepin
Tiffany Wildlife Area
WIMN Sail
Villa Bellezza Winery

SHOPPING

Bluecaf Coffee Roasters
BNOX Jewelry Studio
Dockside Mercantile
E & S Fresh Market
Dougiland Art Studio
Harbor Hill General Store
Pepin Country Stop
Smith Brothers Landing
T+C Latané
Tin Roof Boutique

EVENTS

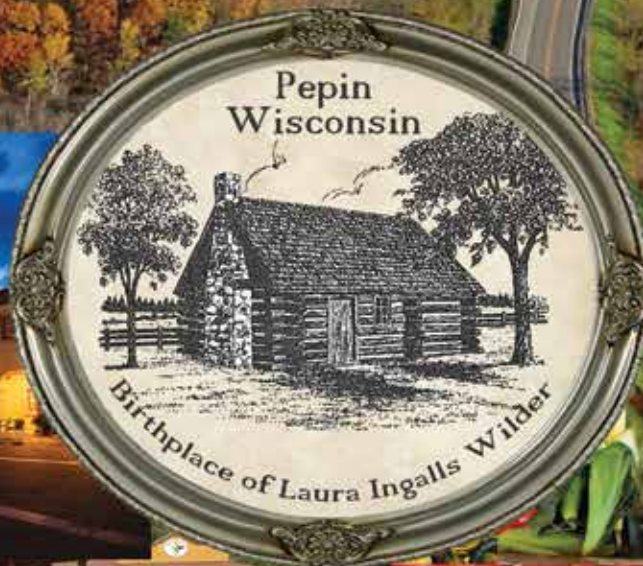
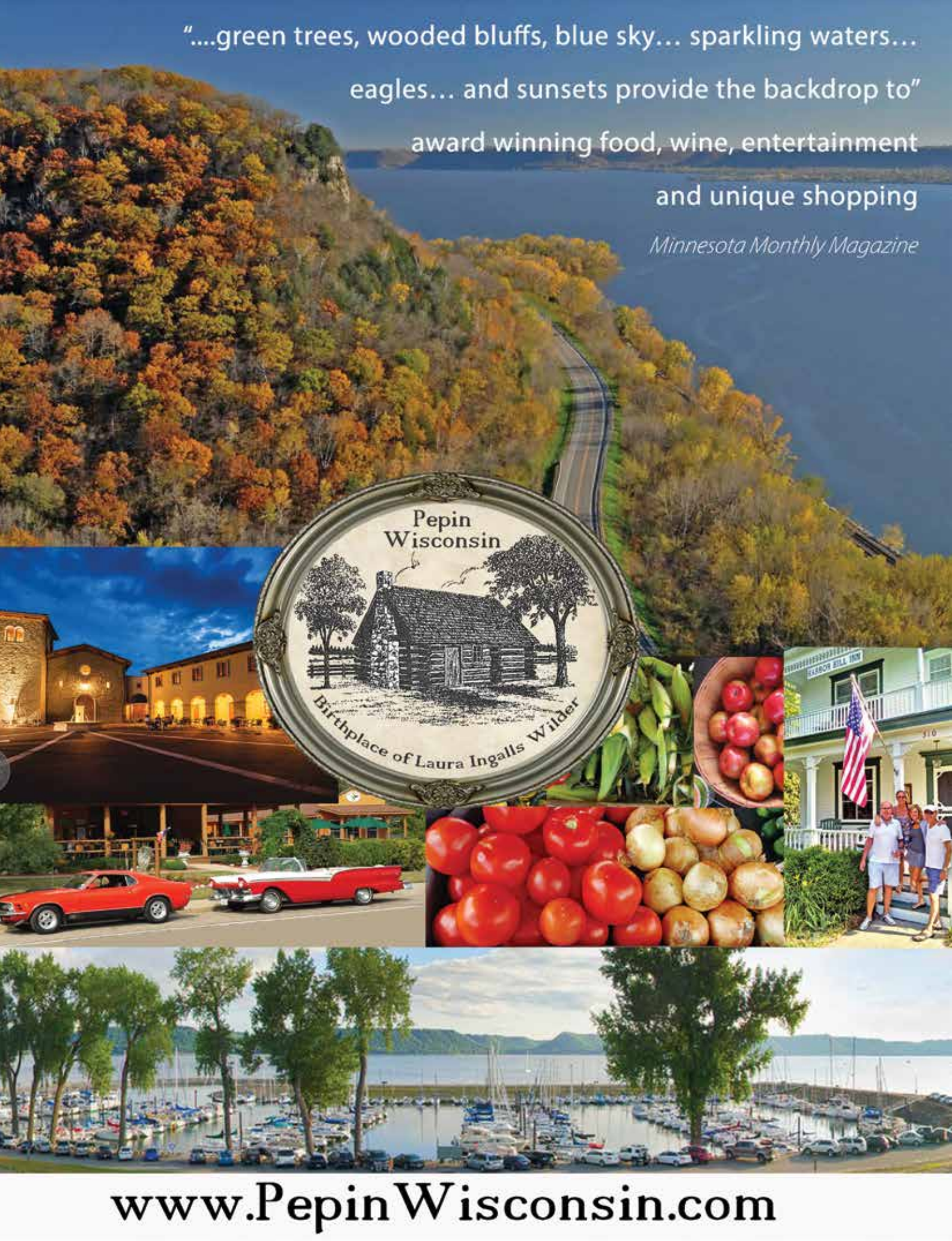
Laura Ingalls Wilder Days



Credit: Steven Date

"...green trees, wooded bluffs, blue sky... sparkling waters...
eagles... and sunsets provide the backdrop to"
award winning food, wine, entertainment
and unique shopping

Minnesota Monthly Magazine



www.PepinWisconsin.com

Four Seasons in Stockholm

STOCKHOLM

WWW.STOCKHOLMWISCONSIN.COM



Make your Day Trip a Stay Trip!



Photos by Whitehouse Inn of Stockholm, Bluffside Birdie and Humble Moon Folkstead

C R E A T I V E L Y
A U T H E N T I C



Stockholm

Artfully Authentic: A magical place to shop, eat, sleep and explore

There's a little bit of magic in the small village of Stockholm.

It's in the shimmering waters of Lake Pepin, where eagles cavort, and in the sound of wind whistling in the trees on the towering limestone bluffs. It's in the friendly faces on the sidewalks and in the cafés. It's in the welcome of the shopkeepers, who ask, "How's your day going?" and truly want to know.

The 66 year-round residents of historic Stockholm embrace the arts, culture, music, great food and fashion as well as history, conservation and the environment. Residents already know about the magic - visitors can find it everywhere they look.

Stockholm is only 90 minutes by car from the big cities, but the village embodies a slower, calmer pace of life. While it may be a bit rural, it's anything but old-fashioned. Stockholm is rich in history. Officially born in 1856, Stockholm became a stopover for Scandinavian immigrants and reached a population peak of 280. You can learn about Stockholm's history at the museum in the old Stockholm post office, open May through early December.

The village is consistently ranked as a world-class shopping destination. Artists and shopkeepers embrace the "shop small, shop local" lifestyle. The money spent goes back into this small community. With the unique variety of independently owned shops, you can easily spend a day exploring and discovering all kinds of treasures such as art work and handicrafts made by local artisans, stunning imports celebrating the Swedish heritage of this small town, high-end kitchen and entertaining supplies, and classy clothing.

Need to get your blood flowing? Grab a free blue bike and pedal, either solo or in tandem, and dare to tackle the hills! You could also bring a kayak or canoe to explore the area by water with a convenient boat launch right in the village park. If you are looking for a hike, head north of town up to Maiden Rock Bluff at the end of Long Road for quintessential bluff views. Be warned of the rustic trail and watch for wildlife! If the beauty of the wilderness surrounding Stockholm inspires you, there's conservation efforts to learn about through the extraordinary local non-profits, which can be supported at Stockholm's annual Big Give event.

In the mood for a break? You will find world famous pie, artisan breads, great cocktails, and food galore in the

Credit: Stockholm Merchants Association



Credit: Steven Date



Credit: Elizabeth Schwerm @elizabeth_after60



Grace J. Baldrige @gracejaneanne

charming eating establishments. We highly recommend taking your meals to-go for an impromptu picnic down by the water at the village park on the shores of the mighty Mississippi River.

Ready to be entertained? Music and theater lovers flock to the performing arts center (in a former 100-year-old opera house located in the village) for an intimate, community centric entertainment experience. If that's not enough, pick from a diverse offering of events. With things like wine trail tours, art studio tours, parades and bicycle rides, there's always something fascinating to see, do, hear and experience.

All of this makes Stockholm an extraordinary vacation spot, with lodging options fitting every budget and group size. You can find accommodations for the folks looking for a camping getaway to the traditional B&B and cozy inn to the large group retreats.

As the colors start to fade and a chill starts to set in, plan a visit with your girlfriends to participate in the annual Women's Weekend event on the first weekend of November. There are guest artists, wine tastings and even classes you can take to learn a new skill. Starting the first Saturday in December the village is transformed for three weekends celebrating God Jül: A Swedish Christmas. Kicking off with horse drawn carriage rides, a Tomté, a Christmas gnome, that hands out treats and even a goat that roams the village visitors are transported to a festive atmosphere of holiday cheer. The second Saturday is Handmade Holiday with DIY stations, guest artists and demonstrations to inspire your holiday gifting. The third and final Saturday celebration is the Fire of Stockholm. As dusk descends, the magic happens with a solstice celebration including luminaries, fire dancers and bonfires.

No matter the season or occasion, take the time to stroll and relax. Above all, relax.



Welcome to Pepin County

BUSINESSES & THINGS TO DO IN STOCKHOLM:

DINING

Bogus Creek Café & Bakery
Gelly's Too
Stockholm Pie & General Store
Stockholm Village Bistro & Bakery

EVENTS

St. Patrick's Day Parade
The Big Give Street Dance
4th of July Parade
Stockholm Stroll
2nd Friday May - October
Stockholm Art Fair
Women's Weekend
God Jül: A Swedish Christmas

OUTINGS

Maiden Rock Winery & Cidery
Stockholm Museum
Stockholm Village Park
Widespot Performing Arts Center
YMCA Camp Pepin

SHOPPING

Abode Gallery
Chandler Books
Här-nes
Hugga Bugga
Humble Moon Folkstead
Indigo Swan
Ingebreetsen's
Matt Anderson Studio Gallery
Northern Oak Amish Furniture
River Road Apparel
Sandy's Clothing and Art
Savvy
Stockholm Gardens
The Palate
The Purple Turtle Artisan Collective



Credit: Steven Date



Arkansaw

Once a booming and industrious town that laid claim to the county seat from 1881 to 1886; Arkansaw is now considered an unincorporated census designated place. Arkansaw has been resilient despite numerous fires and floods to keep their community on the map in Pepin County. Visitors today will find a small community with two watering holes where they can wash their worries away or grab a bite to eat.

The Arkansaw Fur Fish & Game Club actively works to provide community events and activities. They host an annual raffle in February to support their conservation and community activities which include a tree giveaway, maintenance of the Arkansaw Creek Park and Dead Lake boat launch areas, lighting of the park for the holiday season, managing the Arkansaw Community Center and organizing Arkansaw Creek Park Days.

Arkansaw Creek Park is one of Pepin County's beautiful county parks. Featuring vintage playground equipment, a volleyball court, horseshoe stakes, and a picnic shelter with a deck overlooking the scenic Arkansaw Creek,

this park is fun for people of all ages! There is even a time capsule buried at the park! The annual Arkansaw Creek Park Days is a family friendly event complete with live music, food, parades, recreational activities, and their notorious duck races down Arkansaw Creek. More information about the organization and their activities can be found at www.arkansawffg.org.

The Arkansaw Community Center is typically used for community meetings and classes. The building can be rented out for family get-togethers, reunions, or other celebrations. Reservations can be made by calling 715-285-5795.



Photo credit: Kaylee Pickering



BUSINESSES & THINGS TO DO IN ARKANSAW:

Arkansaw Cycle Park
Holden Park Campground
Pete's Sake Bar
The Rec Hall
Scrap-a-latte
Sam's Produce



Credit: Bailey Nordby



Photos credit: Chelsey Fayerweather @mrs.dieselattitude





Town and Country

The rural areas of Pepin County are split into eight municipal units of government referred to as towns. Although there aren't many businesses in some of these towns, the landscape of Pepin County is always worth the drive, especially to view fall colors! The descriptions below are designed to help visitors plan their trip, starting on the east side and working their way to the west side of Pepin County.

ALBANY, on the far east side of Pepin County, shares a border with three different counties (Dunn, Eau Claire, and Buffalo). The countryside of Albany has beautiful rolling hills which originally attracted farming families to the area. Visitors will find a mix of residential and agricultural uses, two bars hidden in the countryside, and some friendly Amish residents.

LIMA was originally settled by Irish and English settlers who were convinced to relocate from southern Wisconsin. In the 1870's, they were joined by a wave of Austrian immigrants seeking the land of opportunity. The area continues to be a picturesque farming community that which the first settlers dreamed of establishing. The farming community is especially proud of the Holy Rosary Church, a beautiful limestone building that was constructed in the latter years of the Great Depression. The parish is known for its Friday night Fish Fries and holds an annual Fall Festival.

DURAND is the last town east of the Chippewa River. Contiguous with the City of Durand, the communities were split into separate units of government in 1887. Durand's landscape is primarily agricultural although there are a few commercial enterprises along highways. Area subdivisions provide a great place to raise a family. The nearby river and bike trail provide an abundance of recreational opportunities throughout the year.

WAUBECK is located immediately west of the Chippewa River. Most of the town is located on top of a bluff overlooking the river valley. On the north end of the town, one can find Waubeek Mound which is the highest point in the northern portion of Pepin County. The town is home to a robust industrial park along the intersection of Highways 10 and 25 as well as wooded residential subdivisions. Visitors will surely want to stop at the Eau Galle Cheese Factory to pick up some gifts and cheese to bring home.

WATERVILLE, in the northwestern portion of Pepin County, has a landscape of forested steep, rolling hills that level out into flat areas perfect for farming. The northern portion of the town is traversed by smaller waterways including the Eau Galle River and Arkansaw Creek as they flow into the Chippewa River, which forms the eastern boundary. Waterville is home to all of Pepin County's county parks, including the shooting range and the campground at Holden Park on the shores of Silver Birch Lake. This town is also a scenic beauty in the fall, and it is worth noting that most of the roadways are paved!

FRANKFORT is in the central portion of Pepin County, to the west of the Chippewa River. County highways provide scenic routes for travelers in search of fall colors, although be careful if you are tempted to venture onto a town road as some of them are gravel. Frankfort is home to the historical hamlets of Dead Lake Prairie, Ella, and Porcupine, which were important to early traders and settlers. Although time has diminished their importance, Dead Lake and Ella both offer boat landings that are popular to those trying to reach their favorite hunting and fishing spots along the Chippewa River.

PEPIN is best known for being the birthplace of Laura Ingalls Wilder. A replica cabin is situated on land owned by the Ingalls family near the hamlet of Lund on the northern edge of the town. With rolling hills and bluffs above Lake Pepin, the landscape is a mix of fields and forests providing a very attractive countryside regardless of the season. Much of the land along the Chippewa River delta has been donated to the Wisconsin Department of Natural Resources and is popular for birdwatching, hunting, fishing, and other recreational activities.

STOCKHOLM is our western most town which is located on a blufftop above the village of the same name. The town received its name due to many Swedish settlers who came to the area. The rich farmland in the uplands supported many families who constructed schools and churches that still dot the rural area; the over a century old Sabylund Lutheran Church remains a landmark near Lund. Off County Road E, one can find the entrance to the blufftop known as Maiden Rock, it is maintained as a state natural area offering picturesque vistas of Lake Pepin!



COUNTRYSIDE

COOPERATIVE

Creative Solutions. Exceptional Value.

- Animal Nutrition
- Agronomy
- Convenience Stores
- Energy and HVAC
- Grain
- Hardware Stores

800.236.7585
www.countrysidecoop.com



PIERCE PEPIN

COOPERATIVE SERVICES

Live Better.®

A Touchstone Energy® Cooperative 

Pierce Pepin Cooperative Services (PPCS) is an electric distribution cooperative located in western Wisconsin serving Pierce and portions of Pepin, St. Croix and Buffalo counties. PPCS purchases electricity from Dairyland Power Cooperative headquartered in La Crosse, Wisconsin. Since our lines were first energized on June 13, 1938, PPCS has grown to serve over 6,800 members, 9,900 meters and 1,300 miles of line. PPCS provides reliable energy services and strives to be an active participant in local communities through advocacy, education and charitable donations.



Wedding and Special Event Venues

Your wedding day is one of the most special days of your life. Make your big day even more enchanting by tying the knot in the venue of your dreams. Pepin County has numerous elegant and alluring churches scattered across the countryside, which may be available for ceremonies. Additionally, these unique wedding and event venues dedicate themselves to making your special occasion a memorable experience.

Weekends booked with weddings are common at the **Villa Bellezza Winery** (Village of Pepin). Step into the Italian countryside and experience the magic. This venue makes it feel as though you are having a destination wedding in Italy right in your own backyard. Visitors rave about the grandiose architecture of the buildings, the impeccable service, and the exquisite scenery.

Looking to hold your wedding in a unique barn that will provide a memorable experience for you and your guests? **The Hidden Meadow and Barn** (rural Pepin) features one of the largest remaining round barns in Wisconsin and gorgeous rustic out buildings. The grounds flow into the sleepy valley behind the farm, with views for as far as the eye can see. The tranquility of this unique country venue offers couples an enchanting wedding dream come true.

Maiden Rock Winery & Cidery (rural Stockholm) is eager to host your wedding, reunion, or other special event in their rural country setting! This venue is flexible and will attempt to accommodate groups of all sizes for your event.

Free-spirited individuals may enjoy holding a celebration event at **Liberty Tree Farm** (rural Stockholm). This venue offers a wedding barn, a stage, lovely hiking trails, parking, and even camping areas for you and your guests. This venue is located on top of the picturesque bluffs and adjacent to Maiden Rock State Wildlife Area.

Overlooking the mighty Chippewa River, the **Durand Rod & Gun Club** now has an outdoor ceremony area for your special day. The banquet hall features a full service bar and seating for around 225 within the building.

At the foothills of the bluffs, the **Pepin Sportsman's Club** offers a full bar, reception, and dance area in a newly remodeled building. This facility is an ideal location for weddings, anniversaries, reunions, and graduation parties.

Club 10 is the perfect venue for a family friendly special event. The banquet area can be split in half for smaller celebrations or left open for large weddings. They offer fully catered meals and bar service, as well as an outdoor festival area, volleyball courts, and bowling alley.

Credit: Angela Kissell, Hidden Meadow

Welcome to Pepin County

Wisconsin Great River Road

The Wisconsin Great River Road consists of 250 miles along the Mississippi River on Wisconsin State Highway 35. The stunningly rugged landscape serves up beautiful views year-round as well as abundant opportunities for outdoor fun and relaxation. The Pepin County portion of the Wisconsin Great River Road offers unique experiences, whether enjoying the natural landscape and resources or experiencing the local life.

The Mississippi River and Lake Pepin, the largest natural lake on the Mississippi, offer boaters and sailors access to numerous landings and marinas. Fishing is a favorite activity because of the variety of fish species, ranging from catfish to walleye to bass. The WI Great River Road is along the Mississippi Flyway, providing the perfect chance for birders to witness hundreds of bird species in their migrations between their northern breeding grounds and southern wintering grounds. Pepin County has several overlooks along the Mississippi, promising great views for birders and sightseers alike. For a more close-up experience, huge sandbars in and along the Mississippi River provide places for camping, beach volleyball, and picnics.

Along the Wisconsin Great River Road in Pepin County, you will find the Villages of Pepin and Stockholm. Each offer unique experiences for shopping and dining and a small-town feel. The communities are also known for their hospitality; hotels and cozy rentals are available for overnight stays. As you travel between the communities and beyond, you will encounter historical markers and scenic lookouts to enjoy the spectacular views of Lake Pepin.

Pepin County is also home to two of eleven wineries on the Great River Road Wine Trail. Maiden Rock Winery and Cidery, just outside of Stockholm, and Villa Bellezza in Pepin offer beautiful views, a variety of wine, and provide the perfect opportunity to relax. Visit www.greatriverroadwinetrail.org for a list of wine events throughout the year.



Credit: Photo credit: Andy Ryerson @andryerson

The Country Stop of Pepin LLC "Farm Fresh Produce"

Open Sunday through Thursday from 9am to 6 pm Friday and Saturday 9 am to 7 pm. Memorial Day through Halloween

The Pepin Country Shop is the area's premier produce market.

Award-winning meats • Wisconsin cheese • Fresh Wisconsin fudge
Fresh Wisconsin maple syrup and honey • Antiques, Garden art.
Outdoor furniture • Storage buildings and more!



1315 Charland Dr., Pepin, WI • www.PepinCountryStop.com • Phone (715) 442-2429

Fall Colors in Pepin County


Pepin County is best described as having a beautiful and scenic rural landscape, perfect for enjoying the fall colors by foot, vehicle, or watercraft. The Great River Road was voted the “prettiest drive” in the United States; the Pepin County segment offers stunning views of tree-clad limestone bluffs as well as Lake Pepin with soaring eagles. There really isn’t a wrong road to travel. Aside from the Great River Road, scenic road trips are also found on county highways or unpaved, windy township roads (if you aren’t afraid of kicking up some dust). Our county website features an interactive map to aid you in planning your fall color cruise <https://pepinco.maps.arcgis.com/home/index.html>

When it’s warm enough, get on the water! Whether you’re sailing on Lake Pepin or in the seat of a kayak in the backwaters, you’ll have a unique view of the colors you might not see from the road. For a birds-eye view, you could have an afternoon picnic on top of Maiden Rock Bluff at Maiden Rock Bluff State Natural Area.

Even when it cools down, there are many things to do while on your tour of the fall colors. You can meander through town festivals, indulge at local restaurants, unwind with a journey along the Great River Road Holiday Harvest Wine & Food Trail, and even peruse one of a kind arts at the Fall Fresh Art Tour. No matter the weather, fall in Pepin County is sure to impress. Peak week is estimated as the third week of October, don’t miss out!

Credit: Andrew Canton

LAKE PEPIN
REAL ESTATE
Specializing in the Lake Pepin Area...and beyond!



David & Linda
Brassfield
Broker/Owners



411 2nd Street, Box 348
Pepin, WI 54759
715.442.4800
LakePepin-RealEstate.com
Like us on Facebook

Homes & Farm • Lake Properties • Bare Land Tracks
Commercial • Properties with Views
Hunting & Recreational

Get Ready for Camping
with the help of Dick's RV

CHECK OUT OUR WEBSITE FOR CURRENT INVENTORY AND SPECIALS

Over 200 New & Used
Units in Stock

Delivery Available

Great Finance Options

Large Parts & Accessory
Department

New Units Arriving Daily

*"Brands you know from a
Dealer you can Trust!"*

Check us out on Facebook
for daily specials




DICK'S RV
800.445.3037 dicksrv.com

www.dicksrv.com
1-800-445-3037
715-672-4218

Durand Rod and Gun Club

The **Durand Rod and Gun Club** is located on the bluff north of Durand overlooking the beautiful Chippewa River. The clubhouse features a full service bar, bar room, kitchen facilities, and dining area with setting for approximately 225 people. In addition, there is a ceremony area located at the edge of the bluff overlooking the River and spacious grounds for event tents and parking. The Rod and Gun Club also has trapshooting facilities and hosts trap shooting leagues and open shooting events.

The clubhouse is available to rent year-round. Every other Thursday during the summer, the Rod and Gun Club hosts John Harmon Chicken Dinners and trapshooting events.

Contact Greater Insurance Services at 715.672.5921 or email to durandagc@gmail.com for dinner reservations or rentals.

Please visit our website at: www.durandrobandgunclub.com for more information.





Natural Areas in Pepin County

Tiffany Wildlife Area

The Tiffany Wildlife Area is a small portion of the most extensive river delta in the Midwest and contains to representative portion of the Larger Chippewa River floodplain forest. Tiffany Wildlife Area has a very large abundance of wildlife habitat on more than 13,500 acres. It is the state's largest continuous floodplain hardwood forest. Hunting and fishing is allowed in Tiffany during hunting seasons. It is a remote area that produces white tail deer, ruffed grouse, turkey, squirrel and waterfowl. Fur bearing animals such as beaver, otter, muskrat and raccoon are also common, however beaver and otter are protected from trapping within the 8,000 acres closed area. Popular game



Photo credit: Maria Nelson

fish include pan fish, walleye, small mouth bass, channel catfish and northern pike. Tiffany Wildlife area is an enjoyable place to birdwatch due to the high diversity of species present.

Motorized vehicles are not allowed. The trails are not marked but the area is open to hiking, cross country skiing and nature study. Primitive camping is allowed by permit only with Tiffany's interior. No developed camping sites are available. Camping permits are available at the DNR office in Alma or call at 608-685-6222.

Visitors can access parking areas on the property along 16th Creek Road, Hwy 35, Bluff Lane, Round Hill Rd, Tulip Lane, and Swede Rambler Lane. Additional land that is part of the Lower Chippewa River State Natural Area can be found surrounding Wilcox Lake, the Thompson slough south of County Road P, and Chippewa River frontage spanning from Silver Birch Lake to Dead Lake.

The Chippewa Valley Motor Car Association

leases the old railroad corridor between the City of Durand and Hwy 35. They collaborate with various non-profits to provide motor car train rides into the Tiffany Wildlife



Credit: Travel Wisconsin

Area for birding, nature study, and general enjoyment. These unique rides into the Tiffany Wildlife Area are offered exclusively in May and September. Check their website to schedule a ride or check for updates at www.ellawisc.com; most rides are organized by private group's so reservations are required.

Lower Chippewa River State Natural Area

The Lower Chippewa River State Natural Area features the largest concentration (4,000+ acres in Pepin County) of remaining prairies and savannas in the state. You will find this habitat on floodplain islands in the river channel and upland forests in the surrounding hillsides. Diversity abounds in the Lower Chippewa River Valley with the largest concentration of rare species in the state; 50% of Wisconsin's plant species; 70% of the state's fish species; 75% of Wisconsin's nesting bird species; 25% of all the native prairies remaining in the state. This wildlife area provides habitat for wildlife and provides people with a place to hunt, trap, and fish. Additionally, visitors can partake in traditional outdoor uses of walking, skiing, snow shoeing, nature study, berry picking, bird watching, etc. Camping is allowed on sandbars along the Chippewa River and in the wildlife area by DNR permit.

Maiden Rock Bluff State Natural Area

This site was established as a State Natural Area and opened to the public in 2004. This State Natural Area protects one of the area's premier limestone cliff faces on a bluff high above the Mississippi River over-looking Lake Pepin. The view of the river valley is said to be the best in the four-state area. The bluff serves as optimal habitat for golden eagles, bald eagles, peregrine falcons, and turkey vultures. Visitors are welcome to walk along the 1.5-mile trail and see Maiden Rock Bluff's unique natural features. For a leisurely stroll, enter via the mowed trail in the prairie portion which will take you directly to the Maiden Rock Bluff. The area is being restored to an oak savanna through the planting and maintenance of burr oak trees to support the native species in this unique ecosystem. The area is perfect for a picnic, birdwatching, hiking, and cross-country skiing.

Access: Located just a five-minute drive from Stockholm's intersection of State Highway 35 and County J, drive north on J 0.7 miles. Turn left onto County Road E and drive one mile to Long Lane, then west about 0.7 miles down a gravel road to the parking area.





WEISS REALTY
HUNTING & FARMLAND PROPERTIES





Specializing in:

Experienced with:

Local expertise:

Hunting Land, Farmland, Hobby Farms, Build Sites & Country Estates

Surveying, Parcel Splits, Zoning/Planning, 1031 Tax Exchanges

Born and raised in the bluff country.



Chad Garteski
507-269-2742
MN & WI Licensed Real Estate Agent
Email: Chad@WeissChoice.com

Brody Weiss
715-279-2156
WI Licensed Real Estate Agent
Email: Brody@WeissChoice.com



Land Wanted!

If you are thinking about selling, call today for a **FREE** market analysis.

www.WeissChoice.com



Explore the Outdoors

Hunting

When it comes to outdoor recreational activities, Pepin County has an abundance of wildlife that is sure to trip your trigger. White tail deer, bear, ruffed grouse, turkey, pheasants, and squirrels can be found hiding in our fields and forests. Waterfowl hunters can find a diverse array of migratory birds along the Chippewa River delta, including ducks and geese. Avid hunters wake up early to get to remote state owned land before sunrise in search of their game of choice.

In need of hunting supplies, look no further than Ryan's Sport Shop on Main Street in Durand or the Countryside Cooperative Hardware Stores. Hunting licenses can be purchased from the Pepin County Clerk at the Pepin County Government Center and select gas stations.

Lake Pepin

The largest lake on the Mississippi River, Lake Pepin is a must-see for both locals and visitors. Lake Pepin is a naturally occurring lake, formed by the backup of water behind sedimentary deposits of the Chippewa River. The lake is 21 miles long with the widest point reaching 1.7 miles and has an average depth of 21 feet. Popular activities on Lake Pepin include boating, fishing, bird watching, swimming, and waterskiing. It's also perfect for finding serenity, whether floating on the water or sitting on the shore.

Pepin Marina

Pepin Marina is a full-service marina on the Wisconsin shore of Lake Pepin offering seasonal and daily rental slips for boaters. Mechanical services and restoration are also available.

Sailing

Don't own a boat? No problem! Pepin has individuals licensed by the U.S. Coast Guard to offer guided sailing excursions.

- Sail Pepin | 715-442-2250 | www.sailpepin.com
- WIMN Sail | 612-850-3069 | www.wimnsail.com
- Pepin Sailing Schools & Charters
<https://www.lakepepinsailing.com/>
- Captain Rob Cruises and Wind Song Sailing
612-599-2757
www.harborhillinn.net/captain-rob-cruises

Fishing

Find your new favorite fishing spot in Pepin County! Between the Chippewa and Mississippi Rivers, backwater areas, lakes, and trout streams, we have fish for every type of angler. Local businesses and organizations sponsor fishing contests throughout the year, come see if you can lure a trophy fish out of our waters!

Beyond Eau Claire, the Chippewa River is a free flowing as it travels through Pepin County to the Mississippi River. The fishery of the Chippewa River represents some of the rarest fish communities in the Upper Midwest. Near Ella, the Chippewa River splits off into several secondary channels to form the Chippewa Bottoms. The Wisconsin Department of Natural Resources reports that the small mouth bass populations peak near Durand due to bank stabilization and micro-habitat projects completed by local land owners and conservation minded groups. Catfish, northern pike, sauger, walleye, and panfish are abundant in Pepin County. Muskellunge naturally reproduce in the lower Chippewa River and sturgeon can be found, although they may be elusive.

Lake Pepin is home to over 100 species of fish, including the following favorites: bass, catfish, pike, sauger, walleye and a variety of panfish. Ice fishing on Lake Pepin is very popular in the winter months as soon as the ice is safe to walk on. Fishing on Lake Pepin requires either a Wisconsin



WELL-KNOWN LAKES & STREAMS:

- **Lakes:** Lake Pepin, Silver Birch Lake, Fortyacre Lake, The Bay, Dead Lake, Thompson Lake, Wilcox Lake, Chimney Lake, Goose Pond, Browning Lake
- **Rivers and streams:** Arkansaw Creek, Bear Creek, Bogus Creek, Cranberry Creek, Duscham Creek, Eau Galle River, Elk Creek, Fall Creek, Little Arkansaw Creek, Lost Creek, Nine Mile Slough, Plum Creek, Porcupine Creek

continued on next page...

or Minnesota fishing license. Fishing on the Mississippi River can be intimidating when trying to find good fishing spots or navigate the backwaters and sloughs for the first time. Consider hiring a local guide, such as Cliff Haugland with Eagle's Cliff Guide Service and Lodging (319-350-1838), to take you out on Lake Pepin.

*Have a list of most well-known lakes and streams as a sidebar, if it looks good

- Lakes: Lake Pepin, Silver Birch Lake, Fortyacre Lake, The Bay, Dead Lake, Thompson Lake, Wilcox Lake, Chimney Lake, Goose Pond, Browning Lake
- Rivers and streams: Arkansaw Creek, Bear Creek, Bogus creek, Cranberry Creek, Duscham Creek, Eau Galle River, Elk Creek, Fall Creek, Little Arkansaw Creek, Lost Creek, Nine Mile Slough, Plum Creek, Porcupine Creek

Campgrounds

Experience the closest connection with nature that you can achieve by visiting one of Pepin County's beautiful campgrounds. Within Pepin County there are three public campground facilities and one privately owned and operated campground. All the campgrounds can accommodate tents or recreational vehicles to provide an enjoyable camping experience for everyone. A bad day camping is still better than a good day working! Please see the chart on the next page for available amenities.

Motorcycling

As soon as the snow melts, motorcyclists start hitting the meandering roads of Pepin County to relax and unwind. If you are a motorcycle enthusiast, plan to partake in the annual Flood Run along the Great River Road each April and September. Many other local charity rides are held throughout the year, the more participants the merrier! The county highways offer beautiful scenic views with less traffic if you are trying to escape.

Horseback Riding

Pepin County is beautiful, especially on horseback. The Pepin Trailblazers saddle club coordinates many activities for its members and other horse enthusiasts. They host a trail ride in the spring as well as several events throughout the summer where you can watch barrel racing, pole weaving, and cattle penning. For updates, find the Pepin Trailblazers on Facebook.

Snowmobiling

Local Snowmobile Clubs collaborate to connect 120 miles of snowmobile trails across Pepin County. As soon as the snow is deep enough for recreation, club members make sure that the trails are groomed and made available to the public to enjoy. To obtain a map of the snowmobile routes, call 715-672-5709; to find out if trails are open please call the snowmobile hotline: 715-672-7669.

Boating

The Chippewa and Mississippi River offer ample opportunity to get out on the water in a canoe, kayak, or other type of recreational watercraft vessel. Enjoy the scenic views of the surrounding landscape and wildlife. Plan for extra time to explore the backwater sloughs and island for a unique adventure. Don't own a boat? No problem, canoes and kayaks can be rented from local outfitters in Durand or Stockholm.

Bird Watching

With our location along the Mississippi Flyway, Pepin County is perfectly situated for bird watching. More than 325 bird species use this flyway to migrate from their northern breeding grounds to their southern wintering grounds and then back again in the spring. Local favorites include eagles, pelicans, and swans. Prothonotary warblers, a smaller and more elusive species, also frequent the flyway. Keep a keen eye – you're sure to spot some unique feathered friends.

Snowshoeing and Cross-Country Skiing

Get your exercise all while enjoying the quiet winter scenery. Grab your snowshoes or cross-country skis and head over to any of the State Natural Areas in Pepin County (see pages 37-38) to experience the wilderness of Pepin County while most are keeping it cozy indoors.

Biking

The 30-mile Chippewa River State Trail partly follows an abandoned railroad corridor; much of the trail is urban and suburban with shorter segments passing through Wisconsin's rustic farmland. The trail meanders along its namesake Chippewa River through a region that is rich in logging and railroad history. You can access the trail near Tarrant Park in Durand. Pepin County residents are not required to have a pass when using the Pepin County portion of the trail. Passes are available at the trailhead as well as the Pepin County Clerk's office.

Explore the Outdoors

RV	Tent	Reservations	Fee required	Boat Landing
Electric	Potable Water	Showers	Vault Toilet	Flush Toilets
Grills	Picnic Tables	Playground: Yes		

CAMPING

Holden Park • Silver Birch Lake • Arkansaw • 715-672-8665 x5

Directions: Go south of Arkansaw on Cty Rd. N for 2.5 miles. The driveway is the first left after Cty Rd. NN

Camping Season: April 1 - Thanksgiving



Lake Pepin Campground • Lake Pepin • Pepin • lakepepincampground.com • 715-442-2012

Directions: From Hwy 35 in Pepin, go north on Locust St. Lake Pepin Campground is on the left

Camping Season: April 15 - October 15

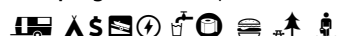


*Boat Landing: About 1 mile from Sportsmans Landing

Stockholm Village Park • Lake Pepin • Stockholm • www.villageofstockholm.com • 651-380-8654

Directions: From Hwy 35 in Stockholm, turn towards Lake Pepin onto Spring St., park/campground is just beyond the railroad tracks

Camping Season: April 1 - October 31

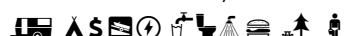


Tarrant Park Campground • Durand

www.durand-wi.com • 715-672-8770


Directions: From Hwy 10 in Durand, take State Rd 85 north. Tarrant Park Campground is across from Bauer Built Sports Complex (track, football field, baseball field)

Camping Season: Year-round with electricity. Water/restrooms are not available May 15 - October (dependent on weather)



*Boat Landing: About 1 mile from River St. boat launch

Visit websites or call for fees and more information.



BAUER
PLUMBING & SEPTIC SERVICE, INC.
N6483 Dorwin's Mill Rd - Durand, WI

CHRIS BAUER
715.672.8224
715.279.3931 Cell

New Construction • Remodeling • Infloor Heat
Perc Tests • Septic Systems

Call Chris for all your Plumbing & Septic Needs!

MP # 220684

AFFORDABLE SLEEP IN PEPIN, WI



THE PRAIRIE HOUSE
LODGING

PrairieHouseInfo@gmail.com
WWW.SLEEPPEPIN.COM

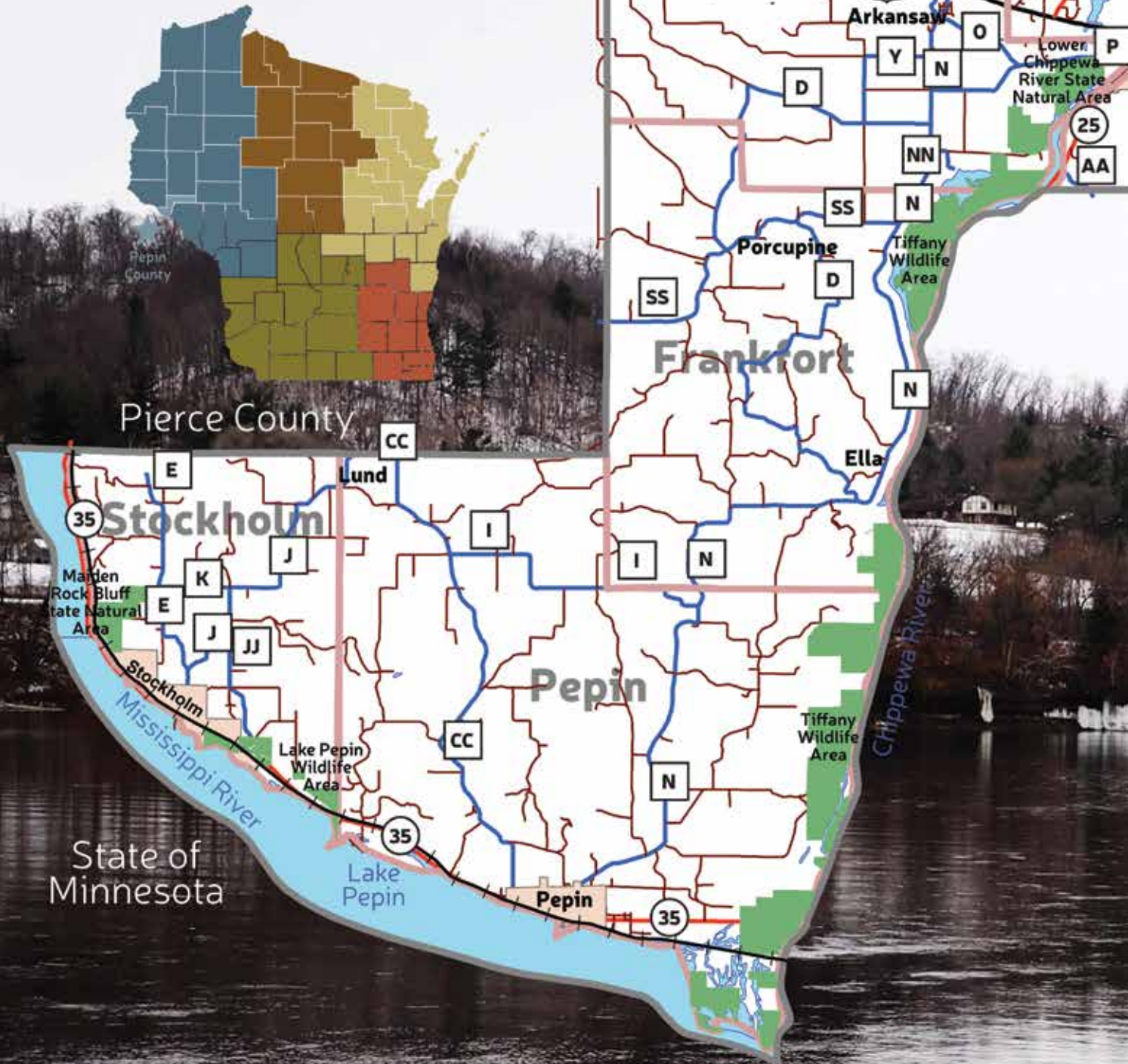
Great River Amish Inn

311 3rd Street
Pepin, WI 54759
(715) 442-5400

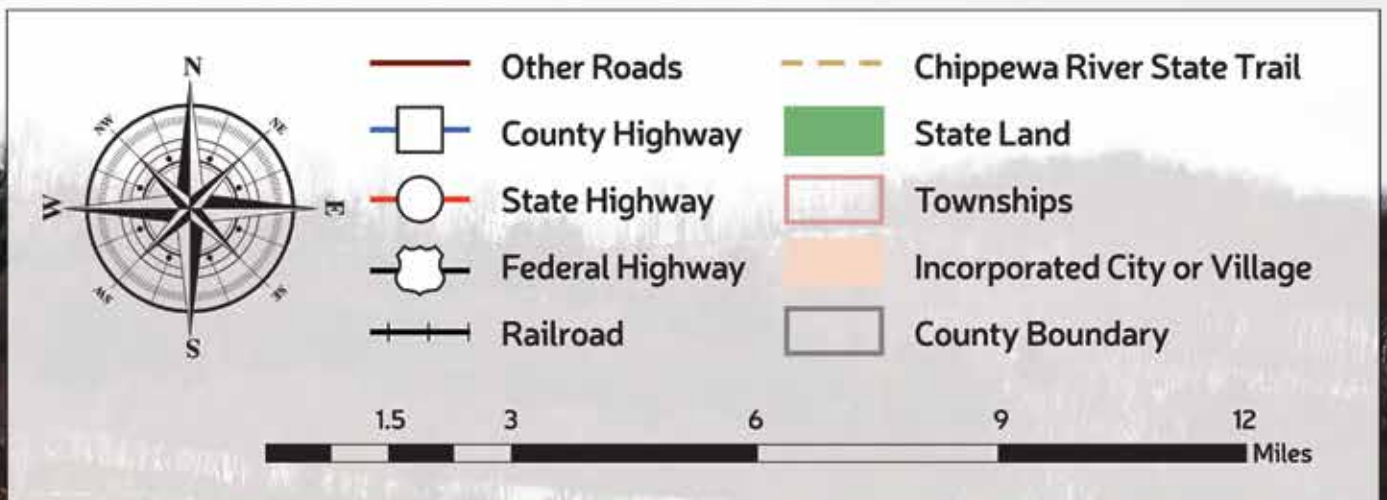
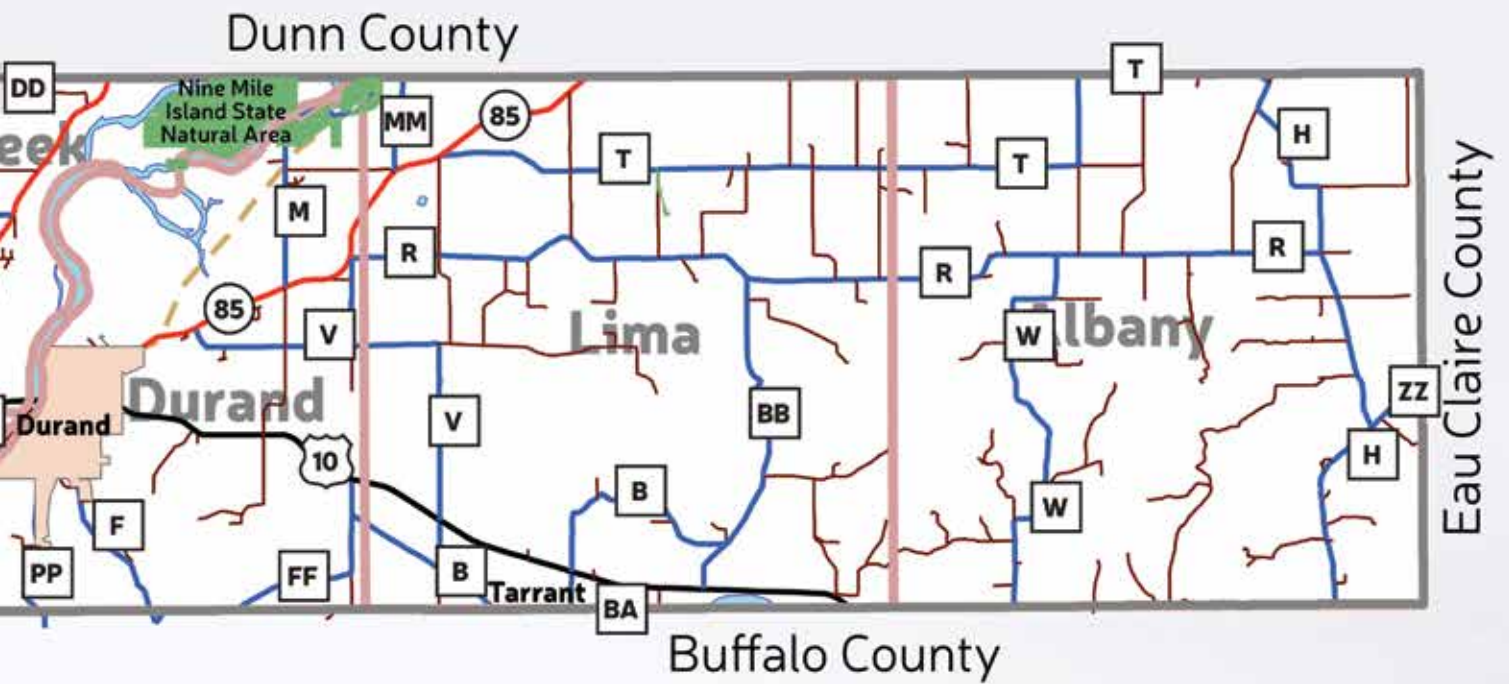
Email: Info@TheGreatRiverAmishInn.com
www.GreatRiverAmishInn

Pepin County Wisconsin

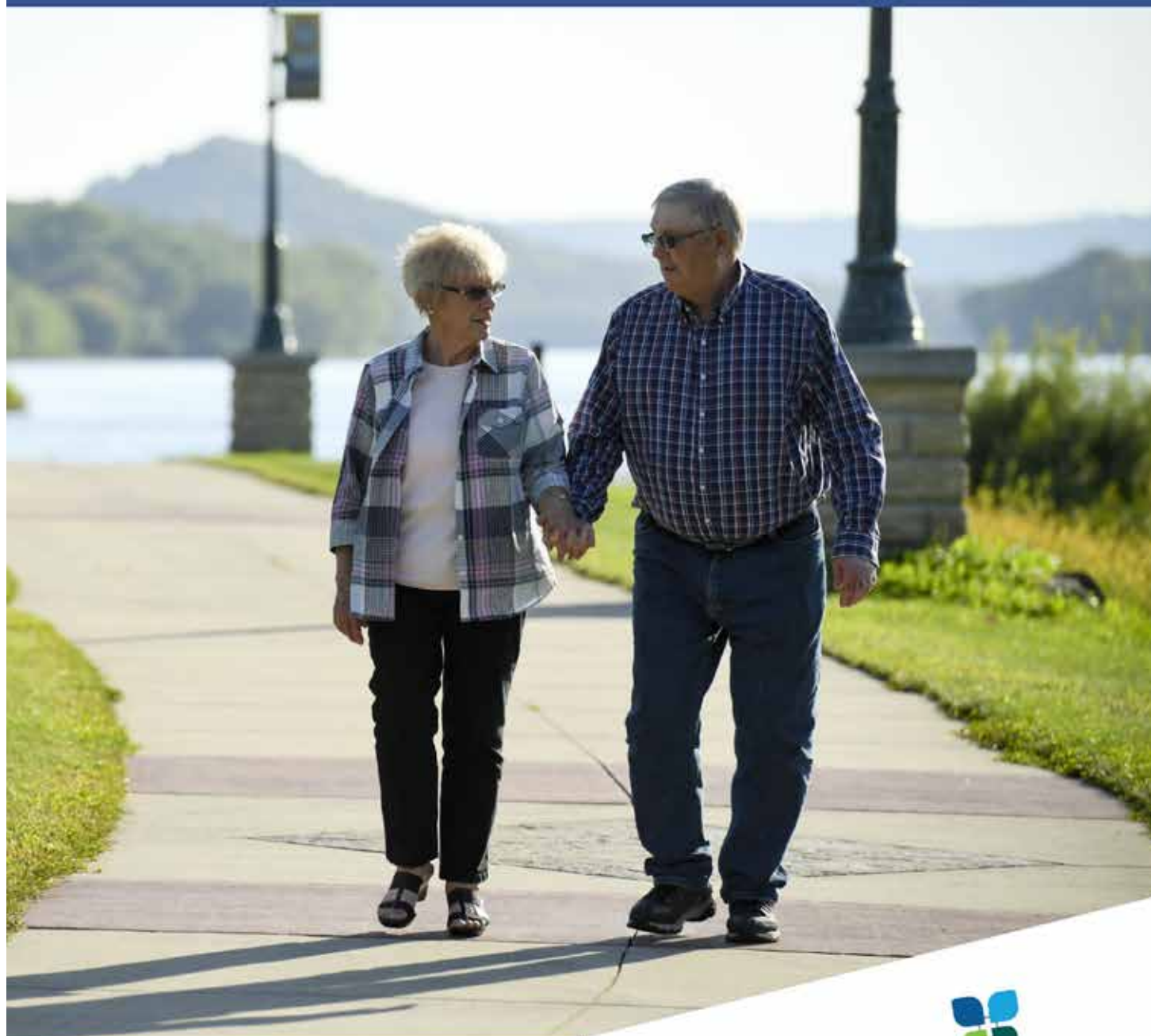
General Highway Map



Credit: Matthew Sam @Matthewsamphotography



feel the compassion of whole-person care.
feel whole



Nap hard. Eat clean. Love big. And start living your best life. Because we're here to help heal what hurts, ease your mind, and lift your spirit with the latest medical innovations and whole-person care. It's time to take control of your health. It's time to **feel whole.**


Advent Health
Durand

1220 Third Avenue West
Durand, Wisconsin 54736
www.adventhealthdurand.com