

ARKANSAW • DURAND • PEPIN • STOCKHOLM

WELCOME TO  
**Pepin County**  
2024 VISITOR GUIDE



# AN ITALIAN WINE EXPERIENCE PEPIN, WISCONSIN



## VILLA BELLEZZA WINERY

---

Wine Tastings | On-Site Italian Restaurant | Wedding Spaces  
**OPEN ALL YEAR**

Located along the scenic Great River Road

[www.VillaBellezza.com](http://www.VillaBellezza.com)



# Travel ITINERARY

## *Best of the West: Pepin County*

- ☐ Visit the Laura Ingalls Wilder Museum and the Little House Wayside cabin
- ☐ Get a taste of pioneer life at Laura Ingalls Wilder Days
- ☐ Hop on a motorcycle and participate in the biannual Flood Run
- ☐ Explore the beautiful and lush Tiffany Bottoms Wildlife Area via train
- ☐ Meet Tomte and Santa Lucia at Stockholm Country Christmas
- ☐ Stop for a piece of pie at Stockholm Pie and General Store
- ☐ Experience the feeling of an Italian piazza at Villa Bellezza Winery and Vineyards
- ☐ Have a glass of honey crisp cider at Maiden Rock Winery and Cidery
- ☐ Celebrate blues music at Blues on the Chippewa
- ☐ Take a sunset sailing cruise on Lake Pepin
- ☐ See the Circus Lithograph at Corral Bar & Grill



*My Notes:*

---

---

---

---

---

---

---

---

# 2024 Pepin County Annual Events

Please like Visit Pepin County on Facebook, follow @visitpepincounty on Instagram, or visit [www.visitpepincounty.com](http://www.visitpepincounty.com) for updates

## FEBRUARY

- 3 Pepin Lions Club Ice Fishing Contest • Pepin
- 17 Winterfest @ Camp Pepin YMCA • Pepin
- 24 Shake off the Snow Craft Sale • Durand

## MARCH

- 2 Mini Putt Putt with Pepin County Tavern League • Durand
- 16 St. Patrick's Day Parade • Stockholm

## APRIL

- 20 Spring Flood Run • Great River Road
- 25-27 100 Miles of Little Town Thrift Sales • Hwy 10

## MAY

- 3-5 100 Mile Garage Sale • Lake Pepin area
- 11-12 Trillium Festival • Stockholm
- 18 Durand Fire Department Annual Chicken Dinner • Durand

## JUNE

- 1 Tour de Pepin • Lake Pepin area
- 7-9 Fresh Art Tour • Countywide
- 7-9 Funfest • Durand
- 8 Pepin County Dairy Breakfast • Countywide
- 14-15 Pepin Trailblazers Barrel Racing • Pepin
- 15 Arkansaw Creek Park Days • Arkansaw
- 19 Music in the Park / unKaiged • Durand
- 22 Scandihootenanny • Stockholm



Credit: Rob Nopola



For local music or pop-up events,  
check out our online calendar

## JULY

- 4 Independence Day Parade • Stockholm
- 17 Music in the Park / Chris Kroeze • Durand
- 20 Stockholm Art Fair • Stockholm

## AUGUST

- 1-3 Blues on the Chippewa • Durand
- 1-4 Buffalo & Pepin County Fair • Countywide
- 6 National Night Out • Durand
- 10 Lake Pepin Pride • Stockholm
- 21 Music in the Park / Taste of Durand -  
The Whitesidewalls • Durand

## SEPTEMBER

- 7-8 Laura Days • Pepin
- 21 Fall Flood Run • Great River Road

## OCTOBER

- 4-6 Fall Fresh Art Tour • Countywide

## NOVEMBER

- 1-3 Women's Weekend • Stockholm
- 21 Pepin Nouveau • Pepin
- 30 Durand Dazzle Days • Durand

## DECEMBER

- 7 God Jul • Stockholm
- 14 Holiday Market • Stockholm
- 21 FIRE of Stockholm • Stockholm
- 28 Holiday Luminary Hike • Arkansaw



Credit: Emily Burton



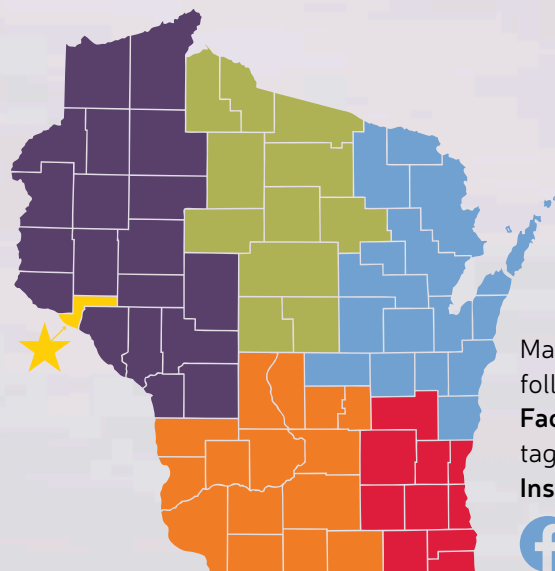
Credit: @kristininmn

# Table of Contents

2024 Pepin County Schedule of Events .....	4
Your #VisitPepinCounty Story .....	6
Pepin County Wisconsin General Highway Map .....	8
Pepin County History.....	10
Arts & Music Events.....	12
Wisconsin Great River Road .....	13
Other Events .....	14

## Communities

Durand.....	16
Arkansaw .....	18
Pepin .....	22
Stockholm .....	24
Dining in Pepin County .....	26
Shopping in Pepin County .....	28
Stay in Pepin County .....	30
Wedding Venues.....	32
Meeting & Special Events.....	33
Train Rides into the Tiffany Bottoms .....	34
The Mississippi Flyway.....	34
Explore the Outdoors.....	36
Fall Color Drives .....	38



Make sure to follow us on **Facebook** & tag us on **Instagram!**



Photography contributed by local photographers, local business owners, visitors, and Travel Wisconsin. Credits have been attributed throughout the guide. Use **#VisitPepinCounty** for a chance to be featured in our visitor guides and social media posts!

Pepin County is not responsible for any photos or content within advertisements or sponsored content.

Cover art: ©Renée Graef. All Rights Reserved.

Printing: CPC Printing

Layout and design: Kristin Mitchell Design

For more information or additional Visitors Guides, email us at [info@co.pepin.wi.us](mailto:info@co.pepin.wi.us) or call 715-672-7242 x 146.

**[www.visitpepincounty.com](http://www.visitpepincounty.com)**



Renée Graef has illustrated over 90 books for children, including the Kirsten series in the American Girl collection and many of the "My First Little House" picture books by Laura Ingalls Wilder. Renée worked as a creative director for the Little House program for Harper Collins for five years and enjoyed traveling to the Laura Ingalls Wilder sites. The first site she visited was Pepin, Wisconsin, of course! Renée and her husband have recently moved to Mineral Point, Wisconsin. A vintage schoolhouse on the property will be her illustration studio, "Storybook Hill."



Kristin Mitchell has owned her graphic design business for almost 27 years and has had the pleasure of working on visitor guides for all of those years. Kristin lives in Mineral Point and loves the Driftless area and Wisconsin! She delights in working on the Pepin County guide every year. Kristin also owns and operates Little Creek Press, an independent publishing company.

# Your #VisitPepinCounty Story



Photo Credit: Courtney Rowan



Photo Credit: @explorewithlauren



Photo Credit: Daniel Askew

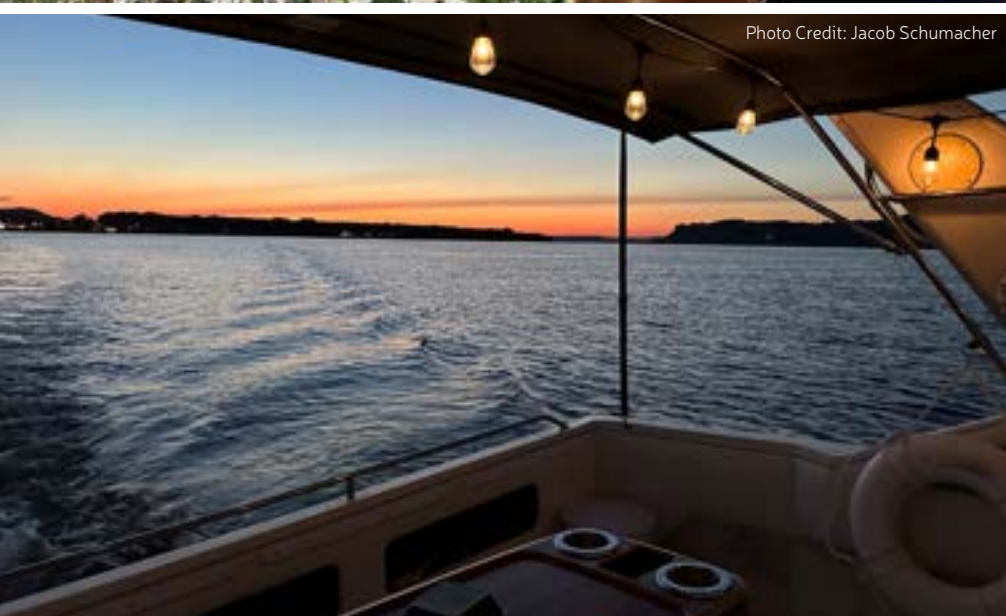


Photo Credit: Jacob Schumacher



Photo Credit: Tracy Tabery



Photo Credit: Jonalee Buckel



Photo Credit: Emily Burton



Photo Credit: @egorovadianaa



Photo Credit: Brian DesLauriers



Photo Credit: @explorewithlauren



Photo Credit: Daniel Askew



Photo Credit: Ryan Miller



Photo Credit: Madison Herzfeld



Photo Credit: John Kurtis Dehn



Photo Credit: three\_little\_birdes



Photo Credit: Jill Anibas



Photo Credit: Mikaelyn Fry

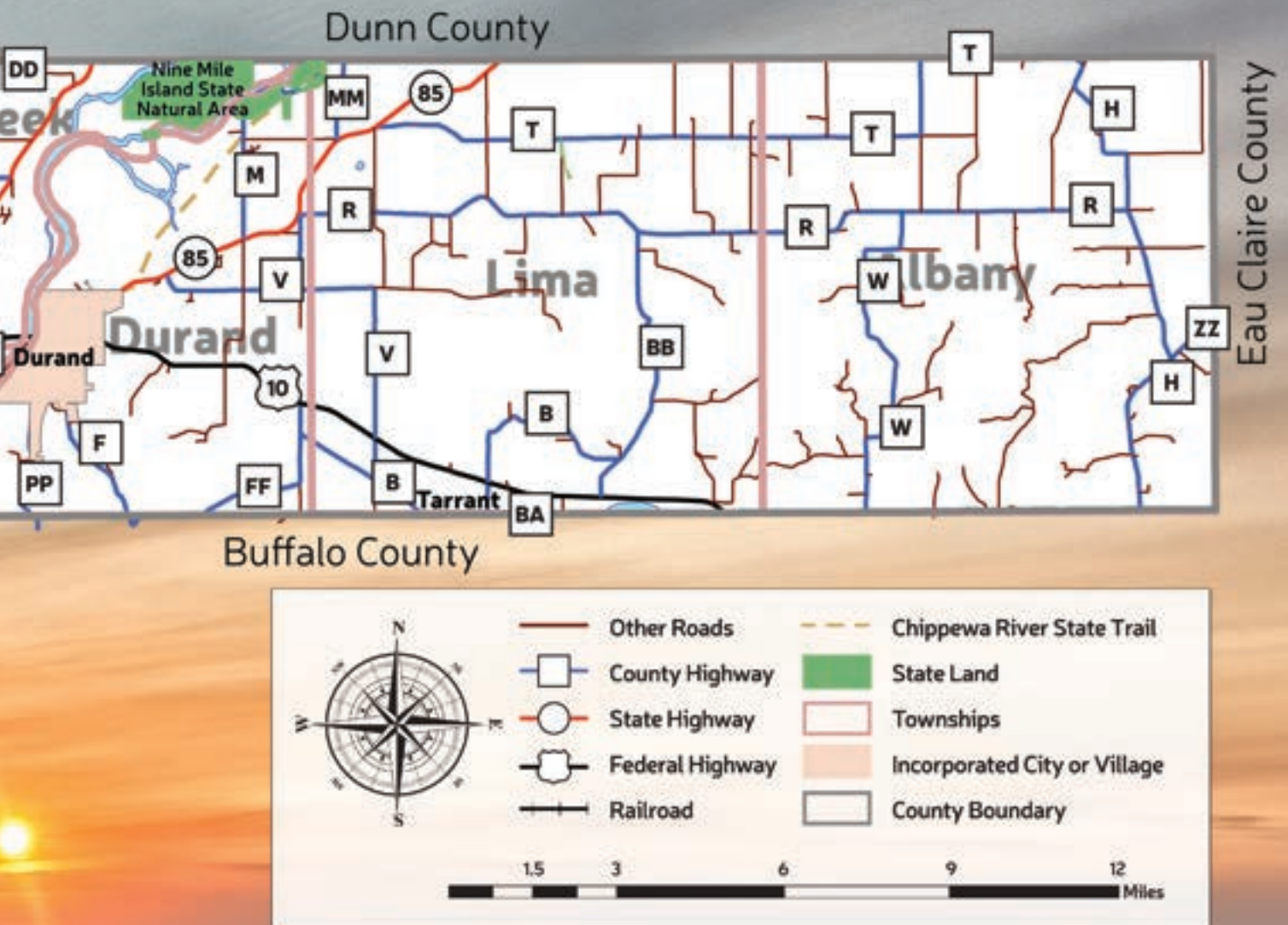
# Pepin County Wisconsin

## General Highway Map



Pierce County

State of  
Minnesota



## DISTANCE TO PEPIN COUNTY

Eau Claire .....	40 minutes
Winona .....	45 minutes
Rochester .....	1 hour
La Crosse .....	1 hour 15 minutes
Minneapolis .....	1 hour 20 minutes
Superior .....	3 hours
Madison .....	3 hours 15 minutes
Milwaukee .....	4 hours

## PEPIN COUNTY IS...

The smallest county in Wisconsin

Along the Mississippi Flyway

Part of the Driftless Region

The birthplace of Laura Ingalls Wilder

On Lake Pepin, the largest lake on the Mississippi River

On the Great River Road, Wisconsin's only All-American Road

Named after Jean Pepin who settled on the shores in the late 1600s

Part of the largest, contiguous bottomland hardwood forest in the state

# First Nations in Pepin County

**We are on Dakota and Ojibwe lands.**

## HOW MAIDEN ROCK GOT ITS NAME

Maiden Rock Bluff got its name from an oral story passed down for generations about a young and beautiful Dakota maiden, Winona, who was in love with a Dakota man. Sadly, interference from relatives forced her to marry someone else whom she despised. Shortly after her wedding she went missing and the next morning it was discovered that she had thrown herself from the bluff, giving it the name, Maiden Rock Bluff.

## DAKOTA AND OJIBWE

The Mississippi and Chippewa River were major highways for both the Dakota and Ojibwe in the region. The Dakota controlled most of the land on the Western side of Wisconsin but Ojibwe, such as the Lac Courte Oreilles would often travel through the area down the Chippewa River to the Mississippi River. Although there were no permanent settlements within Pepin County, according to *History of Buffalo and Pepin Counties*, "The pioneer whites found evidence here of long continued human occupancy. Trails, at places worn several feet deep, followed the highlands bordering the water courses, sometimes scaling the sides and tops of the bluffs, and sometimes dipping into secluded "pockets" favorable for stalking the deer. The absence of trees, except where natural conditions protected them, spoke of springtime burning of the grass by the Indians for countless years. And the presence of the mounds along the Mississippi and Chippewa River terraces spoke of a still earlier occupancy of this region." The Dakota in western Wisconsin and eastern Minnesota were the keepers of the eastern door to the greater Dakota, Lakota, Nakota Nations. Led by Chief Wabashaw, they were semi-nomadic and lived

along the shores of both the Chippewa and Mississippi Rivers. During European settlement, the majority of Dakota were exiled by the U.S. Government to the Great Plains. Only a few families remained in the region. Today, the Dakota have four federally recognized nations within the State of Minnesota. The nearest Dakota tribal nation to Pepin County is the Prairie Island Indian Nation in Red Wing, founded in 1889 when Congress allocated lands to the descendants of these remaining families.

An oral story of a battle on the Chippewa River between the Ojibwe and Dakota has given an island along the river the name "Battle Island." The island is located across from the Five-Mile Bluff SNA and can be access by travel along the Chippewa River.

# Amazing Women from Pepin County

## LAURA INGALLS WILDER-CHILDREN'S AUTHOR

Pepin is famously known as the birthplace of children's writer, Laura Ingalls Wilder. Laura was born seven miles north of Pepin in a small cabin on February 7th, 1867. Her parents were Caroline Quiner and Charles Ingalls. Laura, her sister Mary, and parents lived in Pepin for two years after Laura was born before they moved to Kansas. The family lived in Kansas for a short period of time before moving back to Wisconsin when Laura was five years old. Laura learned many homesteading skills during her time in Wisconsin which inspired her as an adult to write her first book *Little House in the Big Woods*. Laura went on to write a *Little House* series which included *Little House on the Prairie* and *On the Banks of Plum Creek*. The birthplace of Laura is honored with a replica cabin which is open year-round for self-guided tours. The Laura Ingalls Wilder Memorial Society preserves this cabin and is responsible for the ongoing operation of the Laura Ingalls Wilder Museum. Every year, Laura and her many homesteading skills are celebrated with the Laura Ingalls Wilder Days held annually in September. You can also visit the Little Plum Place, the only remaining restored and preserved one room schoolhouse that showcases what life was like for Laura during her schooldays in Wisconsin.



## HELEN PARKHURST-EDUCATOR AND AUTHOR

Helen is known for her creation of the Dalton Plan and founding of the Dalton School which is very closely related to the popular Montessori Schools. Helen was born in Durand in 1886 and graduated from Wisconsin State Teachers College at River Falls in 1907. After graduation she studied at the Universities of Rome and Munich and alongside Maria Montessori. She was awarded her M.A. in 1943 from Yale University. Helen taught in Wisconsin and Washington before taking over as director of all Montessori Schools in the United States. Although Montessori and Dalton are very similar, there are differences.



Montessori—"Help me to do it myself"

Dalton—"Learn to take responsibility of your own learning"

Helen wrote several books and had her own educational program on ABC Radio Network. She has been named one of the 100 Educators of All Time and was decorated by the Queen of Italy, Empress of Japan, Queen of the Netherlands and was greatly admired by Eleanor Roosevelt. Today, Helen's legacy continues with schools in the Netherlands, England, Australia, Japan, and others adopting the Dalton Plan as well as a dedicated lecture hall at UW-Steven's Point. You can learn more about Helen at the Pepin County Courthouse Museum.

## ELIZABETH CLARKE HARDY-POET

Elizabeth Clarke Hardy was born in New York in 1849, but moved to Wisconsin when she was 17. She took a teaching job and was married in Pepin County where she and her husband farmed in the Town of Lima. Elizabeth and her husband proudly practiced progressive farming techniques that were written about by journalists in state magazines and welcomed visitors to their farm. Although she was known locally and at a state level for her agricultural practices, Elizabeth was known nationally for her poems. Elizabeth wrote poems her entire life, but it wasn't until her 70s and after the loss of her husband that she wrote a poem called "The Loney Voyage" also called "The Unknown Shore." This poem was popular at funeral services and was read at memorial services for both President Harding in 1923 and President Woodrow Wilson in 1924.

# Museums in Pepin County

## PEPIN COUNTY HERITAGE CENTER-150TH ANNIVERSARY

The Pepin County Heritage Center is in the old Pepin County courthouse which served residents from 1874-1985. It is the last remaining wood-framed courthouse in Wisconsin and is one of only two existing Greek Revival style courthouses in the state. The adjacent Pepin County Jail was used until 1984 and still displays its rare, iron latticework. For more information, go to [pepincountyheritagecenter.com](http://pepincountyheritagecenter.com).

## LAURA INGALLS WILDER MUSEUM & WAYSIDE CABIN

The Laura Ingalls Wilder Memorial Society was organized in 1974 and through the help of local business owners and the landowner, the society was able to acquire three acres of the land at the original site of Laura's birth. The museum is in downtown Pepin, but to visit the wayside cabin, you will need to take County Road CC about 7 miles, roughly a 10-minute drive from Pepin. The museum is open seasonally from May-October, but the wayside cabin is open 24/7/365 for self-guided tours. Be aware that the driveway is not plowed in the winter.

## PEPIN DEPOT MUSEUM

The Pepin Depot Museum is a restored railroad depot located in Laura Ingalls Wilder Park across from the Homemade Café in Pepin. The museum is no longer open to the public but can still be enjoyed from the outside.

## STOCKHOLM INSTITUTE

The Stockholm Institute, also known as the Stockholm Museum, is run by a volunteer organization dedicated to preserving materials relating to the history of Stockholm, WI. Guests can research area history and family lineage using histories provided by area families, and enjoy the Gärdesgård, or traditional Swedish pole fence, common throughout Scandinavia. The museum is open early May through the God Jul Stockholm Christmas in early December.

# Art and Music Events

## FRESH ART TOUR: JUNE & OCTOBER

The Fresh Art Tour is a semiannual event held the first full weekend of both June and October; this self guided tour will take you through Pepin, Buffalo, and Pierce Counties. Enjoy the beautiful artwork of over two dozen local artists who participate in these events and consider purchasing artwork to take home with you.

## FUNFEST: JUNE

Funfest is a staple Durand community event and has been around since 1964. This event is filled with all your favorite carnival activities such as rides, live music events, car shows, bean bag tournaments, a parade, children's train ride, a 5K Fun Run, and so much more. There is always a plethora of things to do at Funfest!

## SCANDIHOOTENANNY: JUNE

Hang out at Liberty Tree Farm with the Scandihoo crew celebrating MidSommar with fun, friendship, and lots of dancing. You'll find a Scandinavian food truck, music, and Scandinavian enthusiasts celebrating their roots. All are welcome at this event!

## MUSIC IN THE PARK SUMMER SERIES: JUNE, JULY, AUGUST

Sponsored by the Durand Improvement Group and local businesses, the Music in the Park Summer Series is held the third Wednesday of the month throughout the summer at the Memorial Park in Durand. Bring your



Photo Credit: John Fentner

family, friends, and lawn chairs to enjoy an evening of lovely tunes.

## STOCKHOLM ART FAIR: JULY

### \*Special 50th Anniversary\*

The Stockholm Art fair has been bringing together artists to display their unique styles of art for 50 years! This event boasts over 90 vendors making it one of the largest events in Pepin County. You can also expect food trucks, great music, and free parking with a continuous shuttle to the main event area. Stockholm Art Fair is held at the Stockholm Village Park the 3rd Saturday in July.

## BLUES ON THE CHIPPEWA: AUGUST

This free music festival brings musicians and music lovers together from across the country the first weekend in August. The organizers seek to promote positive change through the power of music and showcase the region's wealth of musical artists. The blues are the root of all American music and have a deep cultural history. Experience this abundantly talented event at the Memorial Park in Durand.



Photo Credit: Teddy Snyder

## PRIDE IN THE PARK: AUGUST

Every August, Lake Pepin Pride hosts a pride celebration in Stockholm's Village Park along the shores of Lake Pepin. You'll find speakers, entertainment, supportive nonprofit

## Little Plum Place



Nestled in Little Plum Valley in the heart of the county is the only restored and preserved one room rural school in Pepin County. (10 miles south of Arkansaw on County Road N or 7.5 miles north of Pepin) Privately owned and lovingly preserved, the school built in 1899 hosts a handful open house weekends and is open by appointment or happenstance. Free Admission.

For more information call 715-442-2295.

You can find us on Facebook or visit [www.littleplumplace.org](http://www.littleplumplace.org).



organizations, food, art, and many other unique vendors. Stay to watch performances from drag queens and kings as they hit the stage for dancing and singing but be prepared to dance and sing along with them. This show is all about being proud of who you are!



### LAURA DAYS: SEPTEMBER

Participate in the cultural arts of the past during this celebration held the second weekend of September every year. The literary art of Laura Ingalls Wilder comes to life where visitors are provided with a fun and unique

opportunity to experience the arts up close and personal. Visitors can find a traditional crafts demonstration area, participants in traditional clothing, and a fiddling contest for youth. The event is held at the Village Park in Pepin.

#### Art Galleries & Shops:

Smith Brothers Landing  
T + C Latané  
BNOX Jewelry Studio  
Indigo Swan

For additional information about artists, galleries, and art related events please explore our website: [www.visitpepincounty.com](http://www.visitpepincounty.com)

## Wisconsin Great River Road

The Great River Road runs 3,000 miles following the winding Mississippi River through ten states. Within those ten states is the Wisconsin Great River Road consisting of 250 miles on Wisconsin State Highway 35. The Great River Road has long been known as a National Scenic Byway but in 2021, the Great River Road was

given the honor by the US Department of Transportation to be named an All-American Road. The United States has 184 National Scenic Byways designated, and only 37 All-American roads. The Wisconsin Great River Road is Wisconsin's *only* All-American Road.



Photo Credit: Tom Fisk

# Other Events

## WINTERFEST: FEBRUARY

Have you ever ridden on an ice carousel? Well now's your chance to ride on Lake Pepin's largest! This event is packed with winter family fun events at the Camp Pepin YMCA in February such as snowshoeing, luminary trails, broomball, ice skating, fishing, sledding, arts and crafts, and much more.



## FLOOD RUN: APRIL & SEPTEMBER

One of the oldest and largest motorcycle runs in America, this run dedicates 100% of its fundraising to Gillette Children's Hospital. You can ride along both Wisconsin Highway 35 and Minnesota Highway 61 starting near Hastings/Prescott down to Winona/Trempealeau. Join the run for a spring or fall ride and earn your gold star for completing the route!

## 100 MILES OF THRIFT SALES (HWY 10): APRIL & SEPTEMBER

Get your friends and family together for thrift sales in 10 towns along Highway 10 including Ellsworth, Plum City, Arkansaw, Durand, Mondovi, Eleva, Strum, Osseo, Fairchild, and Neillsville. This three day event is hosted at the end of April and mid-September. You can order a map from their Facebook page.

## TRILLIUM FESTIVAL: MAY

Hosted at Rustic Road Gallery, between Stockholm and Maiden Rock, over Mother's Day weekend. This event is centered around trilliums and the promotion of native plants to help the pollinators. Talk to Wisconsin



Master Naturalists, purchase native plants, and take a walk through the millions of trilliums as they bloom in the valleys of the driftless.

## 100 MILES OF GARAGE SALES (LAKE PEPIN): MAY & SEPTEMBER

Another amazing thrift shopping opportunity in our area! This event runs along both the Wisconsin and Minnesota sides of Lake Pepin in May and September. The Minnesota side runs from Winona to Red Wing and Wisconsin from Fountain City to Prescott. There is no official map, but it's easy to find the sales with signs, balloons, and ribbons painting the sides of the road!

## TOUR DE PEPIN: JUNE

Hosted by Lake City in June, this event runs along the shores of Lake Pepin on the Wisconsin and Minnesota side, making it one of the most beautiful and unique bicycle rides. Shuttle boats will be available at riders convenience. Choose your miles between 32, 40, 50, 72, or a century ride.

## PEPIN COUNTY DAIRY BREAKFAST: JUNE

Long standing tradition of breakfast on the farm serving pancakes, Pepin County sourced maple syrup, sausage, cheese, pudding, ice cream, juice, and milk. This event is held every June for National Dairy Month. There will be a variety of activities and games for the kids and a farm tour.

## ARKANSAW CREEK PARK DAY: JUNE

Usually held over Father's Day weekend, this event has something for everyone at any age. Most famously known for the rubber duck race down Arkansaw Creek, there will also be a parade, tractor pull, food truck, beer tent, live music, and more!

## BUFFALO & PEPIN COUNTY FAIR: AUGUST

### \*Special 150th Anniversary\*

Held the first weekend in August, the Buffalo and Pepin County Fair has everything you could be looking for in a typical county fair. Demo derbies, carnival rides, tractor and horse pulls, live music, and exhibit barns fill the weekend.

## **WOMEN'S WEEKEND: NOVEMBER**

Explore Pepin, Nelson, and Stockholm businesses as they open their doors with deals you won't want to miss. Grab your girlfriends and spend the day shopping and dining at your favorite places on the West Coast of Wisconsin.

## **PEPIN NOUVEAU: NOVEMBER**

On the third Thursday of November, Villa Bellezza will release the first wine of the season, their Pepin Nouveau. Join them for complimentary food and the first taste! You can try Pepin Nouveau through the following weekend, and stock up for the upcoming holiday season.

## **DURAND DAZZLE DAYS: NOVEMBER**

Bring your family to Durand Dazzle Days to shop the HoHoHo Craft Show with two gymnasiums full of vendors, the Kidpalooza where kids can play games, decorate their own cookies, make Christmas crafts, and meet Santa! The day ends with a holiday parade down main street.

For additional information about events, visit our website [www.visitpepincounty.com](http://www.visitpepincounty.com)

## **EUROPEAN CHRISTMAS MARKET: NOVEMBER & DECEMBER**

Experience the tradition of a European Outdoor Christmas Market on the Great River Road. Villa Bellezza transforms their piazzas into a European Christmas Market offering unique art, crafts, and merchandise for gifts and for yourself. You can visit during weekends in November and December.

## **STOCKHOLM HOLIDAY MARKETS: DECEMBER**

Head to Stockholm and Maiden Rock for three weekends of fun, food, and shopping! Each celebration weekend holds a different theme: Old Fashioned Christmas, God Jul, Traditional Scandinavian Holiday, and A Handmade Holiday. You can meet Tomte and Santa Lucia, pet farm animals like an alpaca, ride on a traditional horse drawn carriage, attend fire sculpture burning, and so much more!

## **HOLIDAY LUMINARY HIKE: DECEMBER**

Hosted by the Land Conservation Department in Arkansaw, this luminary hike is a little over a mile and will take you down the new trails built through Holden Park. Self-guided, dogs welcome, family friendly.



**PEPIN COUNTY'S ONLY MICROBREWERY**

Family, Food, and Dog Friendly Beer, Soda,  
Pizza and Light Snacks Available • Live Music Often

**DEEP WATER WELL FOR THE PUREST BEER**

Veteran Owned and Operated  
N6649 State Hwy 25 • Durand, WI 54736 • 715.283.4040

[www.durandbrewingcompany.com](http://www.durandbrewingcompany.com)  
Facebook: Durand Brewing Company

# Durand

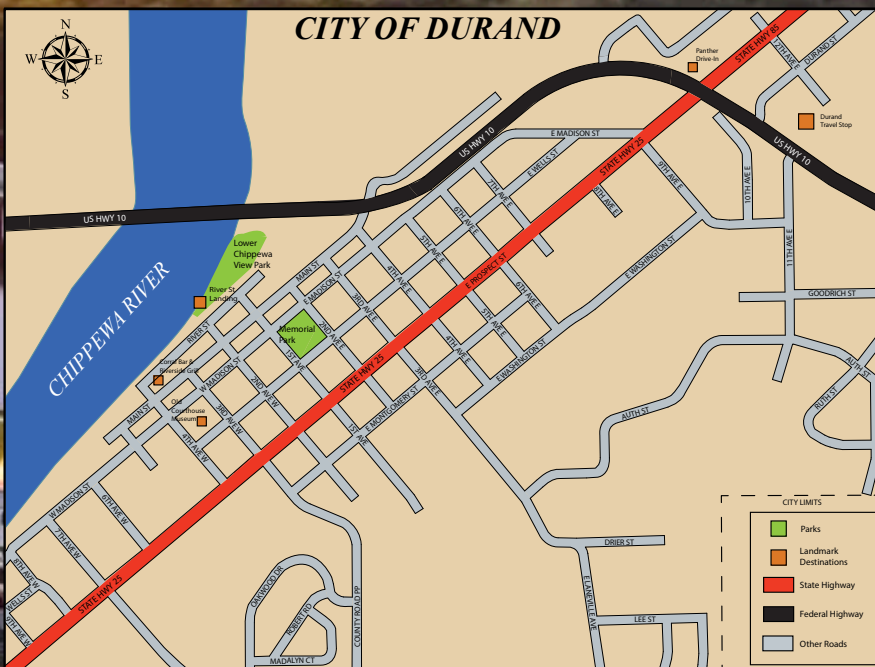
## “On the Banks of the Chippewa”

**D**urand is your next favorite small-town charm community nestled between the banks of the Chippewa River and rolling hills of the Chippewa Valley. In downtown Durand, a must visit is the 1885 Great Anglo-American Circus lithograph inside the Corral Bar & Riverside Grill. The lithograph stretches 55 feet wide and stands 9 feet tall. Meant to dissolve within only a few short weeks, this circus poster miraculously survived through the years and is in excellent shape for us to enjoy today. Adjacent to the downtown area, you can find Wisconsin's last remaining wood-framed courthouse which has been converted into the Pepin County Heritage Center with a goal to preserve and exhibit Pepin County's history. Within this museum, you can find more information about Helen Parkhurst and Elizabeth Clarke Hardy, two famous women from Durand.

Helen Parkhurst was named one of the world's 100 most important educators of the 20th century. She studied under Maria Montessori and developed her own educational theory called the Dalton Plan. From there, Helen opened her own Ivy Preparatory School in New York City, wrote several books, and had a national radio and television program. Elizabeth Clark Hardy was known for her poem “The Lonely Voyage” also called “The Unknown Shore.” This poem became so famous that it was read at two presidential memorial services: President Harding in 1923 and President Woodrow Wilson in 1924.

Durand hosts many musical events throughout the year, but the most popular and well known is the Blues on the Chippewa. Blues artists from around the nation gather to raise money for local non-profits at this popular event. Bring your own lawn chair and book your lodging or campsite early because you won't want to miss this!





## Businesses and things to do in Durand:

### Dining:

Alex's Pizza  
Cell Block Lounge  
Corral Bar & Riverside Grill  
Dairy Queen  
Kingfisher  
McDonalds  
Panther Drive-In  
Perkz Café  
Roostertail Bar & Grill  
Subway  
Rolling Greens Golf Course

### Outings:

Canoe & Kayak Rentals from  
Corral Bar & Grill  
Chippewa River State Trail  
Old Pepin County Courthouse Museum  
Rolling Greens Golf Course  
Tarrant Park

### Shopping:

Durand Smokehouse  
Heike Pharmacy  
Maloney's Baloney  
Ryan's Sport Shop  
St. Vincent de Paul's Thrift Shop  
Stargazers Variety, Antique, and Consignment  
Sunny Skies CBD  
The Cottage: Flowers, Home Décor & More



Photo Credit: John Fenter



# Arkansaw

**A**rkansaw is considered unincorporated but there are endless outdoor recreation opportunities in the area. Arkansaw Creek Park Days is the largest event of the year in this small town, bringing locals and visitors together for music, kids activities, a parade, and more. This event is famous for its rubber duck race down Arkansaw Creek!

In the downtown area you will find Ree Pete Sake's and The Rec Hall; both bars offer great food and will sometimes host rockin' local bands! If you're looking to take a country drive, Twisted Sisters Saloon is your biker/atv/utv destination.

## Businesses and things to do in Arkansaw:

### Dining:

Ree Pete Sake's  
The Rec Hall  
Twisted Sisters Saloon

### Outings:

Arkansaw Creek Park  
Dead Lake  
Holden Park  
Pepin County  
Shooting Range

### Shopping:

Scrap-A-Latte  
Sam's Produce

Around Arkansaw, you'll find numerous outdoor recreation locations. Pepin County's Holden Park is just two miles south of Arkansaw with a campground on the shores of Silver Birch Lake and over a mile of hiking trails within the 80 acres. South of Holden Park is Dead Lake, a popular fishing spot for locals.



Photo Credit: Arkansaw Fur Fish & Game



# Pepin County Tavern League

COMPANY	PHONE	ADDRESS	CITY
Bodhi's Saloon	(715) 672-5991	209 W. Main Street	Durand
Captain's Legacy Bar & Grill	(715) 442-2337	206 Lake Street	Pepin
Cell Block	(715) 672-8580	200 W. Main St.	Durand
Club TEN Lounge Games and Lanes	(715) 672-5681	W4570 US Hwy 10	Durand
Corral Bar & Riverside Grill	(715) 672-8874	318 W. Main Street	Durand
Durand Brewing Company	(715) 283-4040	N6649 WI-25	Durand
Eau Galle Saloon	(715) 283-4221	N383 County Road D	Eau Galle
Hide-a-While Bar	(715) 875-4541	W1505 Albany D W	Mondovi
JR's Mainstreet Bar	(715) 495-5611	124 Pine Avenue East	Plum City
The Pickle Factory	(715) 442-4400	205 1st Street	Pepin
The Rec Hall	(715) 285-5459	N6219 County Road N	Arkansaw
Ree Pete's Bar & Grill	(715) 285-5003	N6210 County Road N	Arkansaw
Nelson Hotel Bar & Grill	(715) 673-4424	S114 Main Street	Nelson
Rivertime Wine-Beer	(612) 708-8598	418 2nd Street	Pepin
Rooster Tail Bar and Grill	(715) 672-3640	106 W. Main Street	Durand
Ron & Angie's Northside Bar & Grill	(715) 926-4711	N5425 County Road H	Mondovi
Spot Bar	(715) 672-8001	306 W. Main Street	Durand
Third Base Bar	(715) 442-2561	409 3rd Street	Pepin
Twin Bluff Bar	(715) 673-4700	S274 Hwy 35	Nelson
Twisted Sister's Saloon	(715) 647-2061	N3413 Cty Rd D	Arkansaw
Werner's Top Hat Bar	(715) 673-4782	N204 Main Street	Nelson



**\$1,000 in Scholarships awarded annually**



**The Mini Putt Putt (Safe Ride fundraiser) is always held the 1st Saturday in March at the Masonic Hall in Durand, WI.**



**Follow us on Facebook**





# CORRAL BAR & RIVERSIDE GRILL

- ✓ Family-owned and operated
- ✓ Full menu of homemade food
- ✓ Daily breakfast, lunch, dinner specials
- ✓ Family friendly, casual dining
- ✓ Large group welcome. Please call ahead
- ✓ Seasonal outdoor dining
- ✓ Deck overlooking scenic Chippewa River
- ✓ Banquet special events: Orton Room
- ✓ Canoe and Kayak rentals. Please call ahead
- ✓ Proudly serving you every day since 1977

Our family and staff would like to extend a sincere thank you to our local and visiting customers who continue to support us during the pandemic, whether by carryouts or otherwise. We would look forward to better serving you when things get back to some sort of normalcy, whenever that may be.



**318 West Main Street, Durand, Wisconsin • (715) 672-8874**



**W**hen the owners of the Corral Bar and Riverside Grill were expanding their dining area in 2015, they discovered an original lithograph poster advertising the Great Anglo-American Circus coming to Durand on August 17, 1885. Upon this discovery, efforts were taken to research and preserve the lithograph so that this piece of history can be enjoyed for years to come!

The 9 foot high by 55 foot long lithograph is believed to be the only remaining circus advertisement billboard for the Great Anglo American Circus, featured in the Smithsonian and the Atlas Obscura. Across the top of the lithograph, one will notice the major attraction of the event, featuring Miles Orton and little Allie and Bernard forming a human tower and balancing on top of a bareback horse running at full speed. As one would expect, this was a sight to be seen and attracted large crowds. We hope you will stop in Durand for a bite to eat, a drink, and to admire this unique piece of local, state, and regional history.

The room where the mural was discovered has been named the Orton Room in honor of Miles Orton, the owner of the Great Anglo-American

Circus. The space featuring the lithograph can accommodate 80 to 100 people and is available for special events such as anniversaries, birthdays, class reunions, retirements or other parties. Events can be scheduled by calling (715) 672-8874, ask for Lori, Sharon, or Ron. For your convenience, the Orton Room is set up with a 5 foot by 10 foot screen and projector as well as Chrome Cast and Apple TV.

✔ To those of you visiting our area, we would like to welcome you to come to historic Durand and stop in for a real taste of Wisconsin and/or a refreshing beverage. Take a view of this unique and fascinating piece of history (poster)

**We recommend calling ahead if you would like to stop in and marvel at the lithograph as the room will not be available when occupied or being prepared for private parties. If interested in hearing the history concerning the circus poster, call Ron at (715) 495-9835 to schedule a time.**

**corralriverside@nelson-tel.net • www.corralbarandriversidegrill.com**




# Pepin

## “Birthplace of Laura Ingalls Wilder”

Pepin is situated on the banks of Lake Pepin, the largest lake on the Mississippi River, and is the birthplace of Laura Ingalls Wilder, the famous children's author. Her book “Little House in the Big Woods” was based on her experiences while living in rural Wisconsin. Pepin quickly grew after its first settler in 1844 and was a stopping point for loggers on both the Mississippi and Chippewa River. Pepin's landscape is described as romantic, with the majestic rolling bluffs overlooking the stunning Lake Pepin. Pepin is easily accessible along the Great River Road and offers everything from a family fun getaway to a mini vacation with your closest friends, or a romantic minimoons with your significant other.

You can enjoy activities on Lake Pepin all year round, but the lake comes to life in the summer. Bring your boat or book a cruise and enjoy a day on the lake swimming, skiing, fishing, or simply watching the sunset. On shore you can find local bands playing, friends sharing delicious drinks and food, and families building memories along Lake Pepin's beaches. Perfect for your next vacation!

Every year, the Laura Ingalls Wilder Museum hosts the Laura Days village event. This event allows visitors to experience life as a pioneer. Demonstrators will show you how to make traditional household items, enjoy their fiddle around the campfire, and give demonstrations on woodworking, sewing, spinning, and cooking. It isn't uncommon to see women in traditional pioneer dresses, aprons, and bonnets and men with straw hats, suspenders, and a suede vest!

 **Villa Bellezza has 22 EV charging stations for guests!**



### Businesses and things to do in Pepin:

#### Dining:

Captain's Legacy Bar & Grill  
Garden Pub & Grille  
Harbor View Café  
Homemade Café  
il Forno Ristorante at Villa Bellezza  
Pepin Bistro  
The Pickle Factory  
Third Base Bar

#### Outings:

Eagle's Cliff Fishing Guide Service  
Five Mile Bluff State Natural Area  
Laura Ingalls Wilder Museum & Wayside Cabin  
Pepin Public Beach & Marina  
Villa Bellezza Winery  
Pepin Train Depot Museum  
Cruise Pepin

#### Shopping:

BNOX Jewelry Studio  
Garden Pub Malt Shop  
Harbor Hill General Store  
Moselle Retail  
Pepin Country Stop  
Rusty Peddler  
Smith Brothers Landing  
T+C Latané  
Tin Roof Boutique  
Triple J's Western Shop

# The Country Stop of Pepin LLC "Farm Fresh Produce"

Open Sunday through Thursday from 9am to 6 pm Friday and Saturday 9 am to 7 pm. Memorial Day through Halloween

**The Pepin Country Shop is the area's premier produce market.**

Award-winning meats • Wisconsin cheese • Fresh Wisconsin fudge

Fresh Wisconsin maple syrup and honey • Antiques, Garden art.

Outdoor furniture • Storage buildings and more!



1315 Charland Dr., Pepin, WI • [www.PepinCountryStop.com](http://www.PepinCountryStop.com) • Phone (715) 442-2429



Tom & Catherine Latané

412 2nd Street

Pepin, WI

715-442-2419

[www.latanepepin.com](http://www.latanepepin.com)

Fine metalwork



Public & private cruises  
departing from the Pepin Marina



Scan/Text/Call  
to book  
612-245-4795  
[www.cruisepepin.com](http://www.cruisepepin.com)



Pepin, Wisconsin

[www.DestinationPepin.com](http://www.DestinationPepin.com)



*A Short Drive to Peaceful*



# Stockholm

## “Small Village, Big Heart”

Stockholm was settled in 1851 by a Swedish man named Erik Petterson. Most of the settlers in Stockholm were of Swedish origin and it was estimated that 90% of those living in Stockholm before the 1900s were Swedish. Today, Stockholm continues to honor that culture with many of the businesses taking on a Scandinavian aesthetic and hosting events that encompass Scandinavian traditions, such as their Christmas celebration, God Jul.

Stockholm is the ultimate unique shopping experience; you'll find everything you didn't know you needed! A ranking of “100 Best Small Towns in America” by travel media company, Far and Wide, listed Stockholm at No. 3 overall. Less than 80 people live in this village, but it is home to a welcoming and cozy community full of artists, craftsmen, and musicians.

A must visit is the world-famous Stockholm Pie & General Store. Stockholm Pie is one of America's favorite pie and café shops winning awards every year for their delicious creations. You cannot drive along the Great River Road without stopping to get a slice or whole pie from Stockholm Pie.

### Businesses and things to do in Stockholm:

#### Dining:

Stockholm Pie & General Store  
Humble Moon Folkstead & Saloon  
Hop Dish & Vine

#### Outings:

Maiden Rock Winery & Cidery  
Stockholm Museum  
Stockholm Village Park  
YMCA Camp Pepin  
Allaire House

#### Shopping:

Felt Good  
Hugga Bugga  
Humble Moon Folkstead & Saloon  
Indigo Swan  
Iris & Oak  
Northern Oak Amish Furniture  
Sandy's Clothing and Art  
Scandihoov  
Stockholm Gardens  
The Palate  
Lavender Bluff Farm  
Stockholm Pie Mercantile  
Little Larke Bakery



**LAURA INGALLS WILDER  
MUSEUM**



306 Third Street, Pepin, WI

**2023 SEASON**  
**May 1 through October 21**

MUSEUM & GIFT SHOP HOURS:  
10 am - 5 pm Daily - 7 Days per Week  
Including Memorial Day, July 4th, & Labor Day

Visit Laura's Birthsite  
GPS coordinates: N3238 Co. Road CC, Pepin, WI  
[www.LauraIngallsPepin.com](http://www.LauraIngallsPepin.com)

the 

FOR YOUTH DEVELOPMENT<sup>®</sup>  
FOR HEALTHY LIVING  
FOR SOCIAL RESPONSIBILITY

**LOOKING FOR THE BEST  
SUMMER EVER?**

OFFERING A WIDE VARIETY OF PROGRAMS FOR AGES 4-17  
FULL BROCHURE AND REGISTER AT [CAMPPEPIN.ORG](http://CAMPPEPIN.ORG)



**YMCA CAMP PEPIN  
IS THE ANSWER!**

**LOOKING FOR A SPACE FOR  
YOUR NEXT RETREAT?**

- SMALL OR LARGE GROUPS
- TEAMBUILDING ACTIVITIES
- ACCESS TO REC. EQUIPMENT
- FULL MEAL OPTIONS

LEARN MORE AT  
[CAMPPEPIN.ORG](http://CAMPPEPIN.ORG)



**THE WEST COAST  
OF WISCONSIN**  
*A Short Drive to Extraordinary*



Discover our magical landscape of bluffs, water and quaint villages while experiencing memorable shopping, lodging, food and great events.



**Bay City  
Maiden Rock  
Stockholm  
Pepin  
Nelson**



[www.thewestcoastofwisconsin.com](http://www.thewestcoastofwisconsin.com)  
[info@thewestcoastofwisconsin.com](mailto:info@thewestcoastofwisconsin.com)  
[@thewestcoastofwisconsin](https://www.instagram.com/thewestcoastofwisconsin)



# Dining in Pepin County

## ARKANSAW AREA

### Ree Pete's Bar & Grill

N6210 Cty Rd N • Arkansaw • 715-285-5003

### The Rec Hall

N6219 Cty Rd N • Arkansaw • 715-285-5459



### Twisted Sisters Saloon

N3413 Cty Rd D • Arkansaw • 715-647-2061

## DURAND AREA

### Alex's Pizza

119 W. Main St. • Durand • 715-672-4303



### Bodhi's Saloon

209 W Main St • Durand • 715-672-5991

### Cell Block

200 W Main St. • Durand • 715-672-8580

### Club TEN Lounge Games and Lanes

W4570 US HWY 10 • Durand • 715-672-5681

### Corral Bar & Riverside Grill

318 W Main St. • Durand • 715-672-8874

[corralbarandriversidegrill.com](http://corralbarandriversidegrill.com)

This local hotspot will make you feel at home with their delicious family style meals. Choose to dine inside and ponder "The Great Anglo-American Billboard" from 1885 or take your meal on their deck overlooking the Chippewa River. Corral also offers a traditional Wisconsin Friday Fish Fry that is hard to beat!



**1018 E. Prospect St.**

**Durand WI 54736**

**715-672-5564**

Burgers, Fries, shrimp&chicken wraps

Malts & Shakes, Cyclones,

Tropical Sno Hawaiian Shaved Ice

*Carbops*

*Frosted mugs of rootbeer*

*Twist, Choc., Van., e3 Flavor Burst Cones*

### Dairy Queen

1101 E Prospect St. • Durand • 715-672-8013



### Durand Brewing Company

N6649 State Highway 25 • Durand • 715-283-4040

[durandbrewingcompany.com](http://durandbrewingcompany.com)

Durand Brewing Company is Pepin County's only microbrewery. Bring your family, friends, and even your dog! Enjoy a freshly brewed beer or soda while playing one of the many games they provide or snack on some pizza, pretzels, and popcorn while you listen to one of the local bands they host.

### Durand Fresh Market

520 W Main St. • Durand • 715-672-5971

### Hide-A-While Bar

W1505 Albany D • Mondovi • 715-875-4541

### Kingfisher

214 W Main St. • Durand • 715-672-3211

### KwikTrip

1101 Hardy St. • Durand • 715-752-8491

### McDonald's

604 Hwy 10 E • Durand • 715-672-4332

### Panther Drive-In

1018 E Prospect St. • Durand • 715-672-5659

Traditional drive-in restaurant with car side delivery from car hops serving sandwiches, fries, wraps & other American food favorites. Their dessert options make a great treat in the summertime offering floats, specialty cones, malks, shakes, and sundaes.

### Rolling Greens Golf Course

1324 3rd Ave W • Durand • 715-672-8139

### Perkz Café

311 W Main St. • Durand • 715-672-3634

### RoosterTail Bar & Grill

106 W Main St. • Durand • 715-672-3640



**Bar Snacks Only**



**Bakeries & Coffee**

### **Ron & Angie's Northside Bar & Grill**

N5425 Cty Rd H • Mondovi • 715-926-4711



### **Spot Bar**

306 W Main St. • Durand • 715-672-8001

### **Subway**

300 W. Prospect St. • Durand • 715-672-3131

### **The Lone Pine**

W2660 Hwy 10 • Mondovi • 715-672-5574

## **PEPIN AREA**

### **Captain's Legacy Bar & Grill**

206 Lake St. • Pepin • 715-442-2337

Just a block off the Great River Road, this bar and grill offers a dine in or patio option with generous and highly rated home-style meals. Be sure to check out their Facebook page for live music events!

### **Garden Pub & Grille**

210 3rd St. (Hwy 35) • Pepin • 715-442-5500

### **Harbor View Café**

314 1st St. • Pepin • 715-442-3893

### **Homemade Café**

809 3rd St. (Hwy 35) • Pepin • 715-941-1164

### **Pepin Bistro**

415 3rd St. • Pepin, WI 54759 • 715-402-2014



### **RiverTime Wine Beer Amusements**

418 2nd St. • Pepin • 612-708-8598

### **The Pickle Factory Waterfront Grill**

205 1st St. • Pepin • 715-442-4400

### **Third Base Bar**

409 3rd St. • Pepin • 715-442-2561

### **Villa Bellezza il Forno**

1420 3rd St. (Hwy 35) • Pepin • 715-442-2424

[www.villabellezza.com](http://www.villabellezza.com)

Within Villa Bellezza, Il Forno Ristorante enhances your wine tasting experience with mouth watering Italian dishes such as antipasti, salads, panini, and pizzas. This country Italian restaurant features a brick oven and dining inside or out in their Piazza Bellezza. Either way, you will feel like you're in Italy.

## **STOCKHOLM AREA**

### **A to Z Produce**

N2956 Anker Lane • Stockholm • 715-448-4802

\*Must follow directions on website

### **Humble Moon Folkstead & Saloon**

W12128 WI-35 • Stockholm • 715-495-0743

### **Hop Dish & Vine**

N2047 Spring St. • Stockholm • 608-317-6369

### **Stockholm Pie Company & General Store**

N2030 Spring St. • Stockholm • 715-442-5505

## **BAKERIES AND COFFEE SHOPS**



### **Allaire House**

W12084 Hwy 35 • Stockholm



### **Batter and Bowls, LLC**

N5813 Cty Rd BB • Durand • 715-579-7765

\*Made to order\*



### **Durand Bakery**

112 W Main St • Durand • 715-672-8780



### **Little Larke Bakery**

W12084 Hwy 35 • Stockholm



### **Pepin Bistro**

415 3rd St. • Pepin, WI 54759 • 715-402-2014



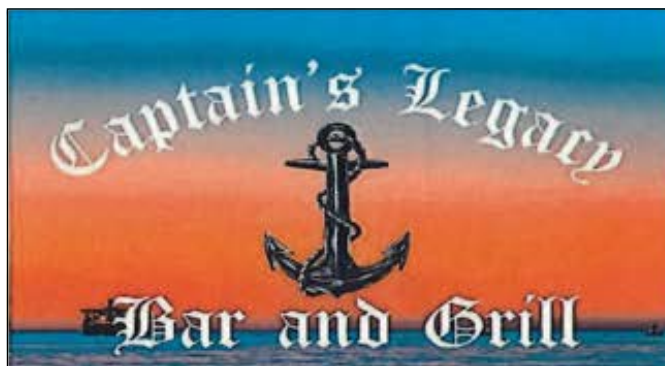
### **Stockholm Pie Company & General Store**

N2030 Spring St. • Stockholm • 715-442-5505

Hours are subject to change, call for more information.



Photo Credit: Emily Burton



# Shopping in Pepin County

## DURAND AREA

**Stargazers Variety, Antique, and Consignment**  
217 W Main Street

**Ryan's Sport Shop** • 406 W Main Street

**The Cottage: Flowers, Home Décor & More**  
315 W Main Street

**Wheatfield Hill Organics** • N5457 HWY 25

**Sunny Skies CBD**  
100 W Main Street

USDA licensed hemp grower, processor, and CBD product company with a retail store in Durand. From soil to oil, right here in Wisconsin! You can find quality CBD products including tinctures, topicals, edibles, bath & beauty, and more!

**Eau Galle Cheese**  
N6765 HWY 25

Family owned business since 1945 with handmade only cheeses. You don't want to miss their National Champion Parmesan and Asiago! Spend some time in their retail store where you'll find one of a kind products and gifts for every food lover in your life.

## ARKANSAW AREA

**Scrap-A-Latte** • N6060 County Road N

**Sam's Produce** • W7272 County Road P



**HEIKE  
PHARMACY**

213 West Main Street • Durand, WI 54736  
715-672-5202 • [heikeinc@nelson-tel.net](mailto:heikeinc@nelson-tel.net)  
[www.heikepharmacy.com](http://www.heikepharmacy.com)

## PEPIN AREA

**Harbor Hill General Store** • 309 3rd Street

**Country Stop of Pepin**  
1315 Charland Drive

A premier country market right on the Great River Road. You'll find anything from a farm fresh produce stand and meats to your favorite new garden decoration or furniture. You'll want to spend some time here to see everything they have to offer!

**Tin Roof Boutique**  
202 3rd Street

You won't find more Lake Pepin items anywhere else, for both the Wisconsin and Minnesota side! Tin Roof Boutique is right on the Great River Road and will become your new favorite store for home décor, apparel, kitchen items, gifting, and more!

**Triple J Western Shop** • 210 Lake Street

**Moselle Retail** • 109 Prairie Street

**Pepin's Rusty Peddler** • N1085 Sand Ridge Road

## STOCKHOLM AREA

**Hugga Bugga** • W12103 HWY 35

**Sandy's Clothing and Art** • W12098 HWY 35

**The Palate** • W12102 HWY 35

**Northern Oak Furniture** • N2048 Spring Street

**Iris and Oak Gallery & Gifts** • W12117 HWY 35

**Scandihoo** • W12092 HWY 35

**Little Larke Bakery** • N2055 Spring Street

**Stockholm Pie Mercantile** • N2030 Spring Street

**Lavender Bluff Farm** • W11976 State Hwy 35

# TIN ROOF BOUTIQUE

Unique gifts, decor, apparel, handbags, candles, games, puzzles, specialty food & candies along with locally one-of-a-kind artisan made handcrafted items and so much more. Located on the Great River Road.

OPEN  
YEAR  
ROUND



202 Third Street, Pepin • 715-225-4047

Like us on Facebook or Instagram at tinroofpepin for updates.

Your One Stop Shop for  
Local Sausage, Wine,  
Take and Bake Pizza and  
Award Winning Cheeses.



Sundays:  
9:30 am to 5:00 pm

Holidays:  
9:00 am to 2:00 pm

N6765 State Hwy 25  
Durand, WI 54736  
715.283.4211



SHOP  
LOCAL

[eaugallecheese.com](http://eaugallecheese.com)

CBD, CBN, and CBG  
products including:

- Tinctures
- Topicals
- Gummies
- Bath & Beauty

...and more!



SCAN to find all  
our CBD products!



**Quality CBD Products For You!**  
**Grown & Crafted In Durand, Wisconsin.**

▶▶▶ We offer FREE SHIPPING on ALL RETAIL ORDERS! ◀◀◀



[SunnySkiesCBD.com](http://SunnySkiesCBD.com) | 715-672-8760 | 100 W. Main St. | Durand, WI 54736

These statements have not been evaluated by the Food and Drug Administration. These products are not intended to diagnose, treat, cure or prevent any disease. Always check with your physician before starting any program.

# Stay in Pepin County

COMMUNITY	RENTAL NAME	# OF GUESTS	# OF ROOMS	NUMBER OF BEDS (& PULLOUT COUCHES)	# BATH-ROOMS	PET FRIENDLY	WATER VIEWS	SEE AD ON PAGE
Durand	<b>Cobblestone Inn &amp; Suites</b> 325 W Prospect St, Durand • 715-672-5057 staycobblestone.com/wi/durand/		31			Y		
Durand	<b>Prospect Place</b> 102 E Prospect St • 608-658-3828 facebook.com/prospect.place.durand	10	3	9	1.5	Y		See ad on page 39
Durand	<b>Junebug Rentals</b> 719 10th Ave E • junebugrentals.com	8	3	6	2			See ad on page 39
Pepin	<b>Pepin Valley Cabins</b> W9592 Balsam Lane • 715-448-0177 hiddenmeadowandbarn.com	40	10					
Pepin	<b>Pepin Marina Retreat</b> 406 1st St • AirBnb • 612-961-2528	6	3	5	2	Y	Y	See ad on page 39
Pepin	<b>Pepin Guest Haus</b> 1485 1st St • AirBnb • 952-237-6014	4	1	2	1		Y	See ad on page 39
Pepin	<b>Great River Amish Inn</b> 311 3rd St • 715-442-5400		7					
Pepin	<b>Pepin Motel</b> 305 Elm St • 715-442-2012 lakepepincampground.com		32					
Pepin	<b>Lost Creek Retreat</b> N1900 County Road CC • AirBnb	4	2	2	1			
Pepin	<b>Pepin Eagles Nest</b> 1480 First St • 952-237-5210 pepineaglesnest.com	8	1	4	2			
Pepin	<b>Cozy Cabin Rental</b> 1204 Charland Dr • AirBnb • 608-443-8794	6	3	5	1			
Pepin	<b>Cozy Cabin Rental 2</b> 1107 Cindis Ct • AirBnb • 608-443-8794	8	3	5	1			
Pepin	<b>The Pepin Cottage</b> 405 Main St • pepincottage.com • 715-495-0745	9	3	6	1			
Pepin	<b>Great River Cottage</b> 406 & 410 Third St • 651-380-9379 greatrivercottage.com	9	3	8	1			
Pepin	<b>Great River Cottage 2</b> 406 & 410 Third St • 651-380-9380 greatrivercottage.com	4	1	1	1			
Pepin	<b>Wildflower Cottage</b> 306 7th St • 715-600-3953 vacationwithraspberry.com	15	5	8	2			
Pepin	<b>Lumberyard Lofts</b> 409 2nd St • 715-600-3954 vacationwithraspberry.com	48	15	18	9			
Pepin	<b>Charming Retreat w/ deck</b> 213 Locust St • AirBnb • 612-743-8589	8	4	4	1			
Pepin	<b>The Main on the Bluff</b> W8497 Sand Road • AirBnb • 612-810-9296	10	4	6	2			
Pepin	<b>Villa del Lago</b> 100 Pine St • AirBnb • 614-580-0079	9	4	6	1		Y	
Pepin	<b>Villa Serra</b> 510 1st St • AirBnb • 614-580-0079	6	3	3	2		Y	

Pepin	<b>Casa de Pepin</b> 610 1st St • AirBnb • 651-249-5912	8	4	4	2		Y	
Pepin	<b>Quonset on the Corner</b> 309 7th St • AirBnb • 651-301-9005	4	2	3	1			
Pepin	<b>Lake Pepin Cottage w/ patio</b> 609 Prairie Ave • AirBnb • 651-335-7499	5	2	4	1	Y		
Pepin	<b>Riverview Respite</b> 400 1st St • AirBnb • 651-955-8209	4	1	2	1		Y	
Pepin	<b>Peace of Pepin</b> 506 1st St • AirBnb • 651-955-8209	8	3	5	2.5	Y	Y	
Pepin	<b>Cedarwood Cottage</b> N1148 Lake Port Rd • AirBnb • 702-219-8722	10	4	4	2.5			
Pepin	<b>Lake Port</b> W10293 State Hwy 35 • AirBnb • 702-219-8722	8	3	4	2	Y	Y	
Pepin	<b>Pepin Country Lodge</b> N1694 Cty Rd N • 715-442-2315	10	4		2			
Pepin	<b>My Lykke Place</b> 400 Dunn St • AirBnb • 715-491-3782	8	3	5	2			
Pepin	<b>Lakeview Creamery North</b> 109 Prairie St • AirBnb • 715-760-1858	4	1	2	1		Y	
Pepin	<b>Lakeview Creamery South</b> 109 Prairie St • AirBnb • 715-760-1859	4	2	2	2		Y	
Pepin	<b>The Paige</b> 902 4th St • AirBnb • 920-960-9123	6	2	5	1	Y		
Pepin	<b>Main Street Suite</b> 107 Main St • AirBnb • 952-221-4394	8	3	5	2		Y	
Pepin	<b>Scenic View Cottage</b> W10354 State Hwy 35 • AirBnb • 952-423-8126	5	2	3	1	Y		
Pepin	<b>The Dock Side on Lake Pepin</b> 304 1st St • docksidelakepepin.com	6	2	2	2		Y	
Stockholm	<b>Birchwood Acres</b> N2925 South Pepin Pava Lane • 612-282-0810 birchwoodacresonlakepepin.com	20	5	12	5		Y	
Stockholm	<b>Camp Pepin YMCA</b> W10915 East Lake Dr • 651-800-9316 redwingymca.org	58	6					See ad on page 25
Stockholm	<b>Allaire House</b> W12084 WI HWY 35 • 612-363-8284 rivertownlanding.com	12	5	7	2	Y		
Stockholm	<b>Bogus Valley Holm</b> N1981 Bogus Rd • AirBnb • 507-273-7706	6	2	4	1.5			
Stockholm	<b>Art Orchard Guest Suite</b> N2042 Spring St AirBnb • 612-770-6741	3	1	1	1			
Stockholm	<b>Lake Pepin Unit w/ Pond</b> N2038 Elm St • AirBnb • 612-990-7374	2	1	3	1		Y	
Stockholm	<b>Modern Beachfront Oasis</b> W12057 State Hwy 35 • AirBnb • 651-247-1147	8	3	6	1		Y	
Stockholm	<b>Carriage House Inn</b> W12360 State Hwy 35 • AirBnb • 715-222-2913	2	1	2	1		Y	
Stockholm	<b>South Bluff Stay</b> N1858 Lawson Ln • AirBnb • Facebook	6	3	3	2			
Stockholm	<b>Barefeet Retreat</b> W11073 W Lake Dr • AirBnb • 715-495-9261	7	3	4	1.5		Y	
Stockholm	<b>Hideaway on Spring St</b> N2049 Spring St • AirBnb • 941-840-2268	4	1	3	1			
Stockholm	<b>Sunset Cottage</b> W12039 Hwy 35 • AirBnb • 941-840-2268	6	2	4	1	Y	Y	

# Wedding Venues

## STOCKHOLM AREA

Liberty Tree Farm • 480-766-9371

Maiden Rock Winery & Cidery • 715-448-3502

Stockholm Pie & General Store • 715-442-5505

Twin Bluff Farm • 612-368-7311

## DURAND AREA

Durand Rod & Gun Club • 715-318-8281

## PEPIN AREA

Pepin Sportsman's Club • 507-261-9438

The Hidden Meadow & Barn • 715-448-0326

**Villa Bellezza Winery** (see ad on page 2)  
715-442-2424

For those wishing to get married in Italy, without the travel. Bring your family and friends to the romantic Villa Bellezza where you can return anytime to experience the small Italian village and relive your wedding day.



# Meeting & Special Events

## Venues

### ARKANSAW AREA

Arkansaw Community Center • 715-495-1456

### DURAND AREA

Club TEN • 715-672-5681

Corral Bar & Riverside Grill (see ad on pages 20 & 21)  
715-672-8874

The Orton Room is a newly built room connected to the Corral Bar & Grill with the 9 feet high and 55 feet long circus lithograph from the 1885 Great Anglo-American Circus. Seating up to 80 people, this room is perfect for your next special event!

Riverview Community Center • 715-672-4101

Rustic Chic Retreat • 715-495-4472

### PEPIN AREA

YMCA Camp Pepin (see ad on page 25)  
651-800-9316 • alsdfjanvoairhgoiwn

The YMCA Camp Pepin is set on the shores of Lake Pepin and is the perfect place to host groups of friends, family reunions, wedding parties and more!

### STOCKHOLM AREA

Stockholm Pie & General Store • 715-442-5505

## Other

### FLORAL

Kallstrom Flowers • 715-495-7049

Love You More Floral Design • 612-578-8505

The Cottage: Floral & Gift • 715-672-4321

### DESSERT & CATERING

Batter & Bowls • 715-579-7765

The Charcuterie Enthusiast

Thecharcuterieenthusiast22@gmail.com

Stockholm Pie & General Store • 715-442-5505



# Train Rides into the Tiffany Bottoms

**T**he Tiffany Wildlife Area is a 13,000 acre property between Pepin and Buffalo County and contains one of Wisconsin's largest, contiguous bottomland hardwood forests. Within the Tiffany Wildlife Area is the Tiffany Bottoms State Natural Area. The property is a transition zone between typical floodplain forest of silver maple, river birch, ashes, and basswood in the southern portion and moves to a more oak-dominated forest in the northern part. Tiffany Bottoms is a birding paradise! Besides typical game species, the area holds rare and uncommon raptors, warblers, great blue heron, pileated woodpeckers, blue-gray gnatcatcher, and many other birds to check off your birding list. Many recreational activities are allowed within the Tiffany Wildlife Area including primitive camping, but a permit must be obtained from the Alma DNR office.

The Chippewa Valley Motorcar Association is an organization of railroaders and rail enthusiasts that lease the tracks owned by the DNR just south of Durand. The train ride runs along HWY 25 about five miles into the



Tiffany Bottoms Wildlife Area and will stop occasionally for visitors to hear about the history of the area or enjoy the beauty of the Tiffany Bottoms. The club allows train rides to the public that are hosted by local organizations. Reservations are required to ride the train and must be made with the host organization, not the Motorcar Association. Follow their Facebook page to stay updated on events and scheduled rides or check out the PBS episode found on their website!

<https://www.cvmca.info/>

 Chippewa Valley Motorcar Association

# The Mississippi Flyway

**T**he Mississippi Flyway is a migration path that follows the Mississippi River from the Gulf of Mexico to Canada, encompassing 21 states. Twice a year, 325 bird species travel the Mississippi Flyway. Half of North American bird species spend at least part of their lives on the Mississippi Flyway. The most active migration times are April-May and September-October. You can help migrating birds by:

1. Turning off non-essential lights from 11pm to sunrise.
2. Painting or decorating your windows to avoid collisions
3. Keeping cats inside, in an enclosure, or on a leash
4. Plant native habitat and food
5. Keep dogs leashed, especially on a beach or in a natural area
6. Support birding groups and legislation
7. Feeding hungry travelers with clean bird feeders and hummingbird feeders—without the red dye!



Photo Credit: Peggy Way



# Pepin County Heritage Center

Pepin County Historical Society

**Preserving the Heritage of Pepin County**

The last remaining wood courthouse in Wisconsin, constructed in 1873-74, it served as the Pepin County Courthouse until 1985. Listed on the State and National Register of Historic Places. Also visit the old jail, built in 1895, displays highlighting Pepin County history, and the research room.

Summer hours: June – August  
Open year-round by appt.  
Free Admission

315 W. Madison Street  
Durand, WI 54736  
715-672-5423



[www.pepincountyheritagecenter.com](http://www.pepincountyheritagecenter.com)



**TIRES**

Car, CUV/SUV,  
Pickup, RV,  
Trailer, Lawn,  
Semi, Farm

Alignments,  
Batteries, Brakes,  
Oil Changes,  
Suspension & More

**SERVICES**

300 W Prospect St,  
Durand, WI **(715) 672-8300**

**ntec** is where  
**#ruralmatters**

Phone, Internet & Cable Provider  
**ntec.net | 715.672.4204**

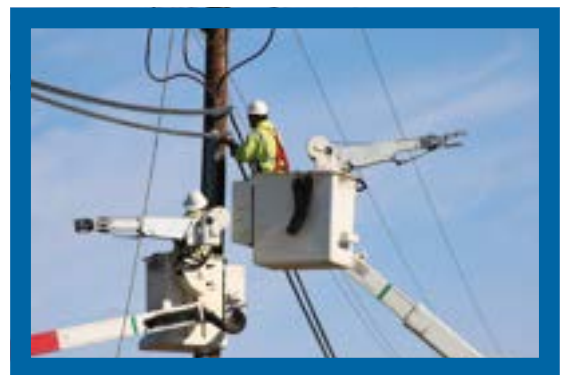
**PIERCE PEPIN**  
**COOPERATIVE SERVICES**

**Live Better.®**

A Touchstone Energy® Cooperative



Pierce Pepin Cooperative Services (PPCS) is an electric distribution cooperative located in western Wisconsin serving Pierce and portions of Pepin, St. Croix, and Buffalo counties. Since its lines were first energized in 1938, PPCS has grown to serve over 6,840 members, 9,900 meters and 1,345 miles of line. PPCS provides reliable energy services and strives to be an active participant in local communities through advocacy, education, and charitable donations. In 2021, PPCS launched a subsidiary, SwiftCurrent Connect, to bring high-speed, fiber internet service to underserved areas of western Wisconsin.



# Explore the Outdoors

## BOAT & CANOE LANDINGS

**P**epin County is a popular spot for fishing and water recreation on both Lake Pepin and the Chippewa River. There are three boat landings to access Lake Pepin, four boat landings to access the Chippewa River, and one canoe landing to access the Chippewa River.

- 1 Stockholm Boat Landing:** Free landing in Stockholm Park accessing Lake Pepin, limited parking, restrooms in park.
- 2 Deer Island Boat Landing:** Free landing on Deer Island accessing Lake Pepin, limited parking, no restrooms.
- 3 Pepin Boat Landing:** \$10 fee to park, access to Lake Pepin, adequate parking, suitable for larger watercraft, fish cleaning station, public restrooms.
- 4 Pepin Highway 35 Boat Landing:** Free landing accessing the Chippewa River, due to sand buildup this landing is hard to access by boat during low water levels.
- 5 Ella Boat Landing:** Free landing accessing the Chippewa River, adequate parking, across from the Tiffany Wildlife Area.
- 6 Dead Lake Boat Landing:** Free landing accessing Dead Lake, during the spring flood there is a chance you can access the Chippewa River.
- 7 Silver Birch Boat Landing:** Free landing accessing Silver Birch Lake.
- 8 Thompson Lake Boat Landing:** Free landing accessing Thompson Lake.
- 9 Durand Boat Landing:** Free landing with adequate parking located between 1st and 2nd Avenue West.
- 10 Durand Main Street Boat Landing:** This landing isn't used as often, limited parking, steeper access, great to use when the Durand Boat Landing is busy or full.
- 11 Hubbard's Landing:** Canoe and Kayak access only, parking lot across from street, you will need to walk downhill with your gear to access the landing.

## HIKING & BIKING

Pepin County has three State Natural Areas with easy access to hiking trails and one county park with hiking trails, as well as one designated biking trail.

- 1 Maiden Rock Bluff SNA:** most popular and well known hiking trails in Pepin County. You can choose two paths: through the prairie, or along the rim. The prairie hike is level and easy, the rim hike has more slight elevation changes and obstacles. Both hikes will take you to the Maiden Rock Bluff with some of the most amazing views, especially during peak fall colors.
- 2 Five Mile Bluff SNA:** Another hike with extraordinary views. This hike will give you an overlook of the Chippewa River and Pepin Valleys with a glimpse of Lake Pepin in the distance but does require a steep climb uphill.
- 3 Holden Park:** Over a mile of new trails built in 2022, this hike will leisurely take you through the woods, but will require a trek uphill along the road to loop back to your vehicle.
- 4 Chippewa River State Bike Trail:** This trail runs from the City of Durand to Phoenix Park in downtown Eau Claire and is open year-round. You will pass through river bottoms, prairies, sandstone bluffs, and wetlands on a well maintained, paved trail. The trail joins with the Red Cedar State Trail in the Dunnville Wildlife Area near the confluence of the Red Cedar and Chippewa Rivers.
- 5 Nine Mile Island SNA:** Perfect for prairie lovers! Although most of this SNA is across the Chippewa and only accessible by boat, some prairies can be accessed and enjoyed along County Road M.

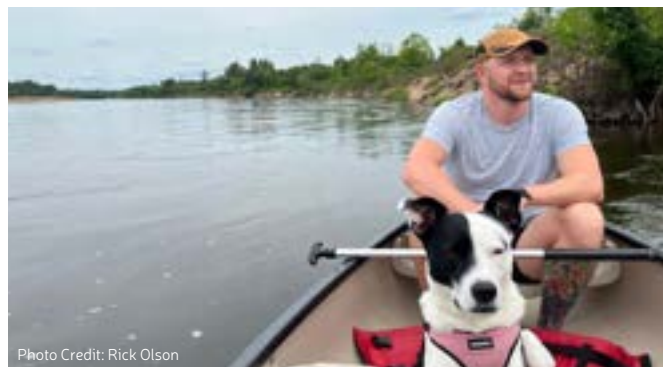


Photo Credit: Rick Olson

## CAMPING

Pepin County has four campgrounds, and they all offer RV and tent camping with electricity, boat launches are nearby, picnic tables, playgrounds, and grills.

### 1 Stockholm Campground

651-380-8654 • [villageofstockholm.com](http://villageofstockholm.com)

- Located in the Stockholm Village Park, this campground is right on Lake Pepin with excellent views and offers a privy toilet, potable water, and swimming beach. First come, first serve.
- Open April 1st-October 15th

### 2 Lake Pepin Campground

715-448-9013 • [lakepepincampgroundwi.com](http://lakepepincampgroundwi.com)

- Located in the heart of Pepin, this campground is the largest campground in Pepin County with roughly 200 campsites that are mostly seasonal camping. Some limited daily sites are offered. Dump station on site.
- Open April 15th-October 15th

### 3 Holden Park Campground

715-672-7242 x 146 • [www.co.pepin.wi.us/holden](http://www.co.pepin.wi.us/holden)

- Just south of Arkansaw, this quiet little park is right on Silver Birch Lake with close access to the Tiffany Wildlife Area and over a mile of hiking trails. A new shower house, flush toilets, and potable water will be built in 2024, stay tuned!
- April 1st-Thanksgiving

### 4 Tarrant Park Campground

715-672-8770 • [durand-wi.com](http://durand-wi.com)

- Located across from the Bauer Built Sports Complex, this campground is right on the Chippewa River Bike Trail with access to showers, tennis courts, and flush toilets. Dump station on site. New swimming pool to be built in 2025.
- Year round, water and restrooms available May 15-October



Photo Credit: Emily Burton

Welcome to Pepin County

# Fall Color Drives

**P**epin County is one of the prettiest places to see fall color in Wisconsin! The best way to stay updated on peak Wisconsin fall color is to visit the Fall Color Report on the Travel Wisconsin website. Pepin County typically peaks in Mid-Late October depending on weather patterns during the year. Dry summer days may force trees to lose their leaves early, or they will prematurely start color production. Adequate summer rains promote good tree health and leaf retention. In the fall, cold and sunny days help trees produce the vibrant colors we wish to see! Here are some of the best fall color tours in Pepin County:

1. Take a leisurely drive down the Great River Road and enjoy the views of Lake Pepin
2. Hike along the rim of Maiden Rock Bluff and take an epic fall color photo
3. Wander your way to Big Coulee Road, known for its vibrant yellow Sugar Maples
4. Overlook the beautiful Chippewa River with a hike up to Five-Mile Bluff Prairie SNA
5. Take a wandering drive along County Road CC and visit Laura's cabin



Two scenic vacation rentals  
with some of the best views of  
Lake Pepin and the Pepin Marina

**PEPIN**  
MARINA RETREAT

[PepinMarinaRetreat.com](http://PepinMarinaRetreat.com)




MP # 220684

**BAUER**  
PLUMBING & SEPTIC SERVICE, INC.  
N6483 Dorwin's Mill Rd - Durand, WI

**CHRIS BAUER**  
715.672.8224  
715.279.3931 Cell

General Plumbing • New Construction  
Remodeling • Infloor Heat • Perc Tests • Septic Systems  
*Call Chris for all your Plumbing & Septic Needs!*

**PEPIN GUEST HAUS**  
Lake View Loft Vacation Rental  
in Beautiful Pepin, WI

1 bedroom, 1 bath - up to 4 guests

Rustic modern architecture, nautical  
décor, rooftop deck, fire pit, walking  
distance to all of Pepin's attractions




[PepinGuestHaus.com](http://PepinGuestHaus.com)

**PROSPECT PLACE**

Stay in a historic renovated church  
when you visit beautiful Pepin County.  
Located blocks from the Chippewa  
River and downtown Durand.



102 E Prospect Street, Durand, WI  
web: [evolve.com/433324](http://evolve.com/433324)  
Facebook: @prospect.place.durand  
email: [prospect.place.durand@gmail.com](mailto:prospect.place.durand@gmail.com)



**JUNEBUG**

VACATION RENTALS

THE OWNERS OF  
**JUNEBUG VACATION RENTALS**  
ARE COMMITTED TO OFFERING  
HIGH QUALITY ACCOMMODATIONS,  
EXCELLENT CUSTOMER SERVICE AND A  
MEMORABLE VACATION EXPERIENCE.

[WWW.JUNEBUGRENTALS.COM/](http://WWW.JUNEBUGRENTALS.COM/)  
[WWW.AIRBNB.COM/ROOMS/53382502](http://WWW.AIRBNB.COM/ROOMS/53382502)  
[WWW.VRBO.COM/2552009?](http://WWW.VRBO.COM/2552009?)

# BUYING OR SELLING RURAL PROPERTY?

48,000  
Acres Sold  
in the Last  
3 Years!



## WEISS REALTY

HUNTING & FARMLAND PROPERTIES

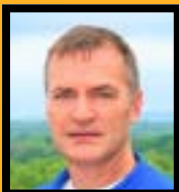


*Specializing in:* Rural properties, farms, hunting land, cabins, build sites, and hobby farms

Locally owned and operated with offices in Durand, WI, Fountain City, WI, and Chatfield MN,  
with full-time staff available during business hours to better serve your needs.

In the past 3 years, Weiss Realty closed over 700 rural property transactions  
amounting to over \$300,000,000 in sales volume which totaled over  
48,000 acres sold primarily in Southeastern MN and Western WI.

The demand for rural properties, country build sites and hunting land  
is as high as it has ever been. It is a great time to considering selling.



**Chad Garteski**  
507-269-2742

Licensed Real Estate Broker in MN & WI

Chad@WeissChoice.com



**Jake Davis**  
715-577-6370

Licensed Real Estate Broker in WI

Jake@WeissChoice.com



**Brody Weiss**  
715-279-2156

Licensed Real Estate Agent in WI

Brody@WeissChoice.com



## Recent Listings

### BUFFALO COUNTY

129 Acres \$1,050,000—Active  
109.95 Acres \$599,000—Active  
100 Acres \$899,000—Active  
92.8 Acres \$510,400—Active  
87 Acres \$408,900—Active  
54 Acres \$378,490—Active  
41.43 Acres \$323,000—Active  
40 Acres \$449,900—Active  
25 Acres \$285,000—Active  
21.85 Acres \$140,000—Reduced  
21 Acres w/Home \$410,000—Active  
2 Acres w/Home \$525,000—Active

### DUNN COUNTY

113.9 Acres \$489,500—Reduced  
16.55 Acres \$110,000—Active

### PEPIN COUNTY

277.75 Acres \$888,800—Sold  
112 Acres \$475,000—Sold  
73.6 Acres \$441,696—Pending  
49.49 Acres w/Cabin \$400,000—Sold

### PIERCE COUNTY

431.81 Acres \$2,700,000—Sold  
124.48 Acres \$500,000—Sold

### TREMPEALEAU COUNTY

137 Acres w/Home \$1,000,000—Active  
60 Acres \$405,000—Active  
35 Acres w/Home \$425,000—Active  
20 Acres w/Home \$645,000—Active

**We Can Sell Yours Too!**

## Land Wanted!

Call today for **FREE** market analysis to find out  
what your property might be worth!

**www.WeissChoice.com**

